

THE IMPACT OF DRY BAKER'S YEAST ON THE SUPPRESSION EFFECTS OF DIETARY AFLATOXIN ON SOME PRODUCTIVE, PHYSIOLOGICAL AND BEHAVIORAL TRAITS OF LAYING JAPANESE QUAIL

H. A. Khalil¹ and M. Abdel-Razik²

1- Department of Animal Production, Faculty of Agriculture, Suez Canal University, Ismailia, Egypt, 2- Department of Microbiology, Faculty of Science, Suez Canal University, 41522 Ismailia, Egypt

SUMMARY

The present study was conducted to testify the impact of dry baker's yeast (DBY, *Saccharomyces cerevisiae*) on the suppression effects of aflatoxicosis in Japanese quail hens from 30 to 38 weeks of age. One hundred twenty quail hens were randomly divided into four groups: three treatments and one control (30 birds each of 3 replicates each). Control group was fed a basal diet while the treatment diets were supplemented with DBY (2 g/kg), aflatoxin (AF, 3 mg/kg) or DBY (2 g/kg) + AF (3 mg/kg). Body weight and mortality rate were recorded during the experimental period. Hen-day egg production, egg weight, egg mass, feed intake and feed conversion were evaluated throughout two intervals of laying period. After 4 and 8 wk from starting the treatment, 12 hens from each experimental group were slaughtered for blood collection and the livers were subjected to histopathological examination. Some hematological parameters (hemoglobin, hematocrit, red blood cells and white blood cells) were evaluated. Plasma total protein, albumen, total lipids, calcium, phosphorus, GOT, GPT, ALP and creatinine levels were analyzed. Also, some behavioral traits of females were recorded through the experimental work. The results confirmed that aflatoxin had significant negative effects on productive, physiological and behavioral traits during the experimental intervals. Quail hens fed diet contaminated with AF recorded the lowest values in most traits through the experimental period. In addition, dietary DBY had obvious positive effects on reducing the aflatoxicosis during the experimental intervals. Birds received DBY + AF exhibited significant improvement for most traits compared to those received AF only. Moreover, addition of DBY only to quail layer diet enhanced some traits but had no significant differences compared to control. Also, the results indicated that the experimental periods had a significant effect on most studied traits, especially in AF-treated group. Our findings strongly suggest that, the supplementation of laying quail's diet with the DBY had prophylactic effect on the performance of AF- treated birds via minimizing the harmful effects of toxin.

Keywords: Aflatoxin, Japanese quail, performance, blood components, behavioral traits, dry baker's yeast

INTRODUCTION

Aflatoxins are toxic fungal secondary metabolites of the genus *Aspergillus* (Betina, 1989). Intoxication of domestic birds by aflatoxin in experimental conditions results in reduced productive and reproductive performance (Leeson *et al.*, 1995; Oliveira *et al.*, 2002; Stanley *et al.*, 2004; Arab Abousadi, 2007; Yildirim and Parlat, 2003), immunosuppression (Broomhead *et al.*, 2002), changes in organs weight (Edds and Bortell, 1983), pathology of liver, kidney and spleen lesions (Glahn *et al.*, 1991; Gokhan *et al.*, 2006) and increased mortality rate (Leeson *et al.*, 1995). Japanese quail was reported to be affected with aflatoxin exposure. Aflatoxin caused reduction in body weight, weight gain, feed intake, feed conversion, egg production, fertility and hatchability (Sawhney *et al.*, 1973; Johri *et al.*, 1990; Oliveira *et al.*, 2002 and Parlat, 2003) and liver and kidney pathology (Gokhan *et al.*, 2004). For minimizing the aflatoxin effects on performance of the toxin exposed birds, physical, chemical and biological treatments were used (Anderson, 1983; Miazzo *et al.*, 2000; Muzaffer *et al.*, 2003; Gokhan *et al.*, 2006 and Baptista *et al.*, 2008). One of the biological methods is supplementation of diet with yeast. Also, it was reported that adding yeast to aflatoxin contaminated feed might improve the birds performance via minimizing the harmful effects of toxin (Yildirim and Parlat, 2003 and Stanley *et al.*, 2004). In spite of the excessive research on effects of aflatoxin on domestic poultry performance, there was fewer works dealing with the relationship among aflatoxin, yeast and productive performance and behavioural traits in laying Japanese quail. Therefore, this study was planned to examine the effects of dry baker's yeast (*Saccharomyces cerevisiae*) on the productive, physiological and behavioral traits of Japanese quail hens fed a diet contaminated with aflatoxin.

MATERIALS AND METHODS

Birds and Housing:

The present study was carried out at the Poultry Farm, Department of Animal Production, Faculty of Agriculture, Suez Canal University and at Microbiology Laboratory, Faculty of Science, Ismailia, Egypt. One hundred twenty 30-wk-old Japanese quail hens were individually weighed and randomly distributed into 4 experimental groups, three treatments and one control (30 birds each of 3 replicates each). The birds were kept in cages (100 x 50 x 40 cm) and given 16hrs light/day through the experiment period. Feed and water were offered *ad libitum* for all the experimental groups.

Preparation and Administration of Aflatoxin:

Sampling: Samples of poultry feeds were collected, homogenized and mixed together, and their moisture content was measured immediately. Ten grams of the samples were dried in an forced air oven for 16hrs at 80°C, then weighed and the initial water contained was determined, as humidity percent (19.2%) is essential for fungal propagation.

Fungus Isolation and Toxin Production: Ten grams of each sample (feed) was mixed with 90 ml of 0.1% peptone water solution, serial dilutions was made, then 0.1 ml aliquots were inoculated on Czapeck's agar with rosebengal, growing fungal colonies were isolated purified and identified according to (Raper and Fennel, 1965). The commonly isolated fungus *Aspergillus flavus* was grown on polished rice till fermentation occurred as described by West *et al.* (1973) and Kubena *et al.* (1990).

Fermented rice toxin was performed using thin layer chromatography (TLC), after extraction of the toxin using according to Richard *et al.* (1993), aflatoxin determination was carried out using high performance liquid chromatography (HPLC) (AOAC, 1995). The AF within the fermented rice consisted of 80% B1, 16% G1, 3% B2, and 1% G2 based on total concentration of AF in the rice powder. The rice powder was incorporated into the basal diet to provide the desired level of 3 mg of AF/kg of diet.

Experimental Diets and Treatments: Japanese quails were fed a conventional corn and soybean meal basal diet, formulated to meet all the nutritional requirements of laying quail according to specifications of the National Research Council (1994). Diet 1 was the control diet, diet 2 contained DBY only (2 g/kg), diet 3 contained AF only (3 mg/kg) and diet 4 contained both DBY (2 g/kg) and AF (3 mg/kg). Hens were provided the diets *ad libitum* for 8 weeks.

Data Collection:

Productive Traits: Individual live body weights, feed intake, egg number and egg weight were recorded and feed conversion ratio, egg production rate and egg mass were calculated weekly and also mortality rate was recorded during the experimental period.

Physiological Traits: At the end of 4 and 8 weeks of the treatment, 12 hens from each group were slaughtered by slitting the jugular vein. Blood samples were collected in heparinized tubes. Red blood cells (RBCs) and white blood cells (WBCs) were counted in fresh blood samples using hemocytometer (Hawkey and Dennett, 1989). Hemoglobin concentration was determined using hemometer (Tietz, 1982). Blood was withdrawn by Packed-cell volume (PCV) capillary tube and centrifuged at 600 rpm for 15 minutes. Hematocrit values (PCV %) were recorded directly (Winderobe, 1965). The blood samples were centrifuged at 3000 rpm for 15 min and plasma obtained was stored at -20°C for further analysis. Plasma total protein, albumen, total lipids, calcium, phosphorus, GOT (Glutamic oxaloacetic transaminase), GPT (Glutamic pyruvic transaminase), ALP (Alkaline phosphatase) and creatinine were determined by calorimetrically by using available commercial kits from Egyptian company for biotechnology (S.A.E.). The globulin values were calculated by subtracting the values of albumen from the corresponding values of total protein.

Histopathology of the Liver: Livers samples of the control and treated groups were immediately removed after slaughtering, fixed in 10% neutral formalin saline, dehydrated in serially ascending alcohol, embedded in paraffin wax. Samples were sectioned and stained with hematoxilin and eosin stains (Bancroft and Stevens, 1990). Sections were examined microscopically and elucidated.

Behavioral Traits: The behavioral traits of all the groups were under observation during the experimental work using a video camera. The behavioral traits were recorded one day a week (3hrs/day, the 1st hr at the morning, the 2nd hr at the afternoon and the 3rd hr at the night). From the video tapes, at 5 minutes interval (time sampling) the basic activities (percentage of birds standing, sitting or walking) and the additional activities (percentage of birds feeding, drinking or preening) were recorded. The obtained numbers were used to calculate as the percentage of birds observed for each trait.

Statistical Analysis:

Data were analyzed using the General Linear Model (GLM) procedure of SAS (SAS Institute Inc., 1998). Least Square Means (LSM) were calculated and Least Square Differences (LSD) between means were tested. Two-way analysis of variance was carried out using the following model:

$$Y_{ijk} = \mu + T_i + P_j + TP_{ij} + e_{ijk}$$

Where:

- Y_{ijk} = the observation on the k^{th} individual from the i^{th} treatments in j^{th} periods of treatment.
- μ = the overall mean.
- T_i = the fixed effect of the i^{th} treatments.
- P_j = the fixed effect of the j^{th} periods of treatment.
- TP_{ij} = the interaction between i^{th} treatments and j^{th} periods.
- e_{ijk} = the random error associated with the ijk^{th} individual.

RESULTS AND DISCUSSION**Productive Performance**

Live Body Weight and Mortality Rate: The initial body weight (30 weeks old) did not differ significantly among the treatment groups, indicating the complete randomization of distribution of birds into the experimental groups (Table 1). The final body weights at the end of experiment were significantly ($P \leq 0.05$) lighter for quail group which fed diet contaminated with AF than others. Moreover, quail group which received diet contained AF recorded only mortality rate compared to other groups. Similar results were recorded by Johri *et al.* (1990); Doerr and Ottinger (1980); Chang and Hamilton (1982) who observed reduction in body weight of laying quails fed aflatoxin concentrations ranged from 500 to 10,000 $\mu\text{g}/\text{kg}$ for 28 to 100 days. Also, Ogido *et al.* (2004) found that body weight reduced in quail hens fed diet contained 200 μg of AFB1/ kg for 140 days. Furthermore, Gokhan *et al.* (2004) found that body weight was lowered in quail chicks fed diet contaminated with AF at 2.5 ppm for 21 days compared to control chicks. Also, Muzaffer *et al.* (2003) recorded higher mortality rate in birds fed diet contaminated with aflatoxin than control birds.

On the other hand, the body weight was significantly increased in the group of birds which received DBY with AF compared to the group which received AF. These results are in agreement with those obtained by Parlat (2003); Santin *et al.* (2003) who found that live yeast and cell wall of live yeast at 1 to 2 g/kg diet added with 2.5 to 5 mg/kg AF improved body weight in quail and broiler chicks. Also, Arab Abousadi *et al.* (2007) reported that addition of *Saccharomyces cerevisiae* at 2 g/kg plus 125 ppb AF, improved body weight of broiler chicks. Finally, AL-Homidan and Fahmy (2007) found that added dried yeast to the basal diet of broiler chicks slightly increased the percentage of survivability compared to control group.

Egg Production Traits: All production traits were significantly affected by treatments during the different laying periods. Production rate, egg number, egg weight and egg mass were significantly ($P \leq 0.05$) reduced following aflatoxin contamination to in the diet compared to untreated groups during the intervals or the entire period studied (Table 1). Our results are supported by that of Oliveira *et al.* (2002) who observed decreased egg weight in laying quail hens fed 50 or 100 μg of AFB1/kg for 168 days. Also, Stanley *et al.* (2004) reported that production rate of Comb broiler breeder was significantly lower for birds fed diets contaminated with 3

mg/kg AF for 3 weeks than control birds. Moreover, Ogido *et al.* (2004) observed that Japanese quail fed diets contaminated with AFB1 at 50 to 200 $\mu\text{g}/\text{kg}$ for 140 days showed losses in egg production.

Table 1. Effects of dry baker's yeast (DBY) in feed on some productive traits of quail hens fed diet contaminated with aflatoxin (AF)

Items	Treatments			
	Control	DBY (2g/kg)	AF (3mg/kg)	DBY(2g/kg) +AF(3mg/kg)
Body weight (g)				
Initial weight ¹	226.62±2.49	227.25±2.47	226.91±2.41	229.41±2.39
Final weight ²	245.33±2.46 ^a	251.12±2.51 ^a	195.35±2.41 ^c	234.33±2.31 ^b
Changes	18.71±1.78 ^a	23.87±1.84 ^a	-31.56±1.92 ^c	4.92±1.74 ^b
Egg production rate				
Period I ³	83.14±2.37 ^a	86.25±2.39 ^a	57.69±2.48 ^c	72.43±2.12 ^b
Period II ⁴	71.46±2.84 ^a	75.82±2.17 ^a	39.11±2.08 ^c	66.18±2.61 ^b
Overall	77.31±1.67 ^a	81.03±1.74 ^a	48.41±1.65 ^c	69.32±1.56 ^b
Egg number/hen				
Period I	23.28±1.12 ^a	24.15±1.11 ^a	16.14±1.45 ^c	20.25±1.64 ^b
Period II	20.00±1.41 ^a	21.23±1.74 ^a	10.95±1.31 ^c	18.51±1.46 ^b
Total	43.28±1.29 ^a	45.38±1.09 ^a	27.12±1.47 ^c	38.76±1.36 ^b
Egg weight (g)				
Period I	12.46±0.35 ^a	12.54±0.34 ^a	10.25±0.28 ^c	11.87±0.37 ^b
Period II	12.63±0.29 ^a	12.89±0.37 ^a	9.13±0.24 ^c	11.57±0.38 ^b
Overall	12.54±0.26 ^a	12.72±0.21 ^a	9.69±0.20 ^c	11.72±0.25 ^b
Egg mass (g/hen)				
Period I	290.11±12.12 ^a	302.85±11.14 ^a	165.45±12.09 ^c	240.37±11.95 ^b
Period II	253.61±12.07 ^a	273.67±12.45 ^a	99.98±11.92 ^c	214.13±11.67 ^b
Total	542.71±9.74 ^a	577.23±8.69 ^a	265.42±9.69 ^c	454.51±9.14 ^b
Feed intake (g/hen)				
Period I	850.51±6.13 ^a	845.45±6.42 ^a	709.12±5.94 ^b	830.61±6.12 ^a
Period II	826.11±6.24 ^a	805.67±6.75 ^a	520.48±6.19 ^b	785.15±5.64 ^a
Total	1677.62±4.35 ^a	1651.12±4.74 ^a	1229.61±5.12 ^b	1615.76±5.37 ^a
G feed/ g mass				
Period I	2.93±0.32 ^{bc}	2.79±0.34 ^c	4.29±0.36 ^a	3.45±0.32 ^b
Period II	3.27±0.30 ^{bc}	2.96±0.31 ^c	5.21±0.35 ^a	3.66±0.34 ^b
Overall	3.09±0.21 ^{bc}	2.88±0.20 ^c	4.63±0.24 ^a	3.55±0.20 ^b
Total Mortality	0/30	0/30	6/30	0/30

^{a,b,c,d} Means±SE in a row with no common superscript differ significantly ($P \leq 0.05$).

^{1,2} Initial body weight at 30 wks and final body weight at 38 wks of age., ³ Period I = Average 4 wks from start of the treatments (31-34 wks of age), ⁴ Period II = Average 4 wks after the first period (35-38 wks of age).

However, the addition of DBY only at 2 g/kg to quail diet enhanced egg production parameters but had no significant differences compared to control. In addition, hens fed DBY mixed with AF showed significant ($P \leq 0.05$) improvement in all egg production parameters compared to those fed diet contaminated with AF throughout the entire experimental period. These findings are similar with results obtained by Stanley *et al.* (2004) who reported that yeast culture residue at 2 lb/ton supplementation to diet contained AF at 3 mg/kg significantly improved egg production of Comb broiler breeder. Also, Yildirim and Parlat (2003) reported that addition of *Saccharomyces cerevisiae* at 2 g/kg to diet contaminated with AF at 5 mg/kg of diet improved ovary weight of Japanese quail.

Feed Consumption and Feed Conversion Ratio: Data presented in Table 1 showed significant differences among experimental groups on feed consumption and feed conversion ratio. Concerning the intervals or the entire period studied, feed intake of birds received AF only was significantly ($P \leq 0.05$) decreased compared to other groups. However, no significant variations were detected between control, DBY and AF plus DBY groups in total feed intake during the experimental periods. Also, the results cleared that quails fed diets contaminated with AF had the poorest feed conversion and least efficient feed utilization compared with the other groups.

Our results are in accordance with those of Sawhney *et al.* (1973) who noticed that feed conversion was adversely affected in quail exposed 2 to 6 mg/kg of AFB1 for 6 weeks. Also, Oliveira *et al.* (2002) reported that Japanese quail fed diets contained AFB1 above 50 $\mu\text{g}/\text{kg}$ resulted reduction in feed intake. Also, Gokhan *et al.* (2004) found that quail chicks received diet contaminated with AF at 2.5 ppm decreased feed consumption.

On the other hand, the addition of DBY only to quail layer diet improved feed conversion compared to control group but this improvement was not significant. In addition, the inclusion of DBY in the AF-treated diet significantly improved feed intake and feed conversion throughout the entire experimental period. These findings were observed by Parlat (2003) who found that yeast (1 g/kg) supplemented to diet contaminated with AF (2.5 mg/kg) for quail chicks improved feed intake and feed conversion compared to AF diet, also with Santin *et al.* (2003) reported that addition of cell wall yeast to diet contaminated with mycotoxin improved feed conversion in broilers chicks. Data observed that productive traits were affected by the experimental periods especially in AF-treated group, which showed significantly reduction during the second period compared to the first period of laying. This result indicates that the toxin had a cumulative effect on the productive performance of the birds.

Physiological Traits

Plasma Biochemical Parameters: Compared with the control, feeding AF resulted in a significant decrease in all levels of plasma biochemicals assayed (total protein, albumin, globulin, total lipids, calcium and phosphorus) during the intervals or the entire period studied (Table 2). These results agree with those obtained by Gokhan *et al.* (2004) who reported that most biochemical values were significantly changed in quails after received AF at 2.5 ppm for 21 days compared to controls. Also, Stanley *et al.* (2004) reported that concentrations of total protein, albumin, globulin, calcium, and phosphorus were significantly lower of broiler breeder hens that fed diets

contaminated with AF at 3 mg/kg. Similar findings were reported by Gokhan *et al.* (2006) who found that broiler chicks fed diet contaminated with 1 ppm AF for 42 days, decreased total protein and albumen compared to control group.

Table 2. Effects of dry baker's yeast (DBY) in feed on some plasma biochemical constituents of quail hens fed diet contaminated with aflatoxin (AF)

Items	Treatments			
	Control	DBY (2g/kg)	AF (3mg/kg)	DBY(2g/kg) +AF(3mg/kg)
Total protein (g/dl)				
Period I ¹	5.61±0.59 ^a	5.98±0.61 ^a	3.46±0.54 ^b	5.20±0.61 ^a
Period II ²	6.42±0.67 ^a	6.60±0.59 ^a	3.01±0.61 ^c	4.69±0.63 ^b
Overall	6.02±0.28 ^a	6.29±0.32 ^a	3.23±0.28 ^c	4.94±0.32 ^b
Albumen (g/dl)				
Period I	3.56±0.25 ^a	3.75±0.24 ^a	2.12±0.21 ^c	3.05±0.21 ^b
Period II	4.28±0.26 ^a	4.42±0.23 ^a	1.52±0.26 ^c	2.71±0.21 ^b
Overall	3.92±0.22 ^a	4.08±0.21 ^a	1.82±0.22 ^c	2.88±0.21 ^b
Globulin (g/dl)				
Period I	2.05±0.12 ^a	2.23±0.14 ^a	1.34±0.16 ^b	2.15±0.14 ^a
Period II	2.14±0.16 ^a	2.18±0.12 ^a	1.49±0.12 ^b	1.98±0.12 ^a
Overall	2.08±0.11 ^a	2.21±0.11 ^a	1.41±0.10 ^b	2.06±0.11 ^a
Total lipids (g/l)				
Period I	32.02±2.24 ^a	29.54±2.36 ^a	18.26±2.61 ^c	20.42±2.70 ^b
Period II	41.88±2.15 ^a	38.65±2.64 ^a	21.36±2.26 ^c	27.19±2.47 ^b
Overall	36.95±1.58 ^a	34.09±1.37 ^a	19.81±1.27 ^c	23.80±1.94 ^b
Calcium (mg/dl)				
Period I	8.62±0.29 ^a	8.98±0.31 ^a	6.12±0.24 ^c	8.22±0.26 ^a
Period II	8.29±0.24 ^a	8.56±0.31 ^a	4.16±0.34 ^c	6.85±0.29 ^b
Overall	8.45±0.21 ^a	8.77±0.20 ^a	5.14±0.18 ^c	7.53±0.21 ^b
Phosphorus (mg/dl)				
Period I	4.98±0.34 ^a	4.81±0.37 ^a	3.00±0.29 ^b	4.15±0.27 ^b
Period II	5.25±0.32 ^a	5.09±0.33 ^a	2.12±0.28 ^c	4.02±0.27 ^b
Overall	5.11±0.24 ^a	4.95±0.21 ^a	2.56±0.23 ^c	4.08±0.21 ^b

a,b,c,d Means±SE in a row with no common superscript differ significantly ($P \leq 0.05$).

¹ Period I = After 4 wks from starting of the treatment (34 wks of age).

² Period II = After 4 wks from the first period (38 wks of age).

Furthermore, the addition of DBY to the diet containing AF improved the decline in plasma components during the experimental intervals. These results are in agreement with the results obtained by Stanley *et al.* (2004) who reported improvement in the depressed values of albumen and globulin following yeast supplemented to Comb broiler breeder diet. Also, Arab Abousadi *et al.* (2007) found

that *Saccharomyces cerevisiae* at 2 g/kg plus AF at 125 ppb resulted in improvement against negative effects of AFB1 in total protein concentration in broiler chicks.

Blood Hematological Parameters: Significant ($P \leq 0.05$) variations were found among experimental groups in all hematological parameters values (Hb, Ht, RBCs and WBCs) during the experimental intervals (Table 3). Quails fed diet contaminated with AF had the lowest values compared to other groups. Moreover, the addition of DBY to the diet contaminated with AF improved these parameters that were significantly higher than the AF-treated group except WBCs value which was significantly higher than all treated and control groups. This improvement agree with Kemal *et al.* (2003) who reported that immunity of broiler was improved when used baker yeast mixed with diet contained AFB1. Also with Tollba and El-Nagar (2008) found that supplemented live yeast to Egyptian local strain layers diet improved immunity compared to control birds.

Table 3. Effects of dry baker's yeast (DBY) in feed on some hematological parameters of quail hens fed diet contaminated with aflatoxin (AF)

Items	Treatments			
	Control	DBY (2g/kg)	AF (3mg/kg)	DBY(2g/kg) +AF(3mg/kg)
Hemoglobin (g %)				
Period I ¹	12.02±0.41 ^a	11.82±0.45 ^{ab}	9.68±0.42 ^c	11.12±0.39 ^b
Period II ²	11.53±0.47 ^a	11.98±0.46 ^a	8.78±0.41 ^c	10.08±0.42 ^b
Overall	11.77±0.31 ^a	11.91±0.32 ^a	9.23±0.30 ^c	10.61±0.35 ^b
Hematocrit (%)				
Period I	40.54±1.19 ^a	39.45±1.14 ^{ab}	35.15±1.24 ^c	38.45±1.32 ^b
Period II	40.66±1.13 ^a	42.38±1.16 ^a	32.19±1.08 ^c	35.01±1.16 ^b
Overall	40.61±0.85 ^a	40.91±0.82 ^a	33.67±0.79 ^c	36.73±0.73 ^b
RBCs (10⁶X/ml)				
Period I	2.45±0.04 ^a	2.56±0.02 ^a	2.11±0.02 ^b	2.47±0.04 ^a
Period II	2.81±0.02 ^a	2.89±0.03 ^a	1.86±0.03 ^c	2.22±0.02 ^b
Overall	2.63±0.03 ^a	2.73±0.01 ^a	1.98±0.02 ^c	2.34±0.03 ^b
WBCs (10³X/ml)				
Period I	18.12±0.47 ^b	19.58±0.41 ^b	15.42±0.39 ^c	22.36±0.45 ^a
Period II	18.54±0.39 ^b	20.34±0.41 ^b	12.12±0.42 ^c	28.67±0.46 ^a
Overall	18.33±0.33 ^b	19.96±0.35 ^b	13.77±0.30 ^c	25.51±0.35 ^a

^{a,b,c,d} Means±SE in a row with no common superscript differ significantly ($P \leq 0.05$).

¹ Period I = After 4 wks from starting of the treatment (34 wks of age).

² Period II = After 4 wks from the first period (38 wks of age).

Liver and kidney functions: Data in Table 4 show significant ($P \leq 0.001$) effects of different treatments on liver and kidney functions during the different periods studied. Hens received AF only had the highest abnormal levels of GOT, GPT, ALP and creatinine compared to other groups during the experimental intervals of laying hens. On the other hand, diet with DBY plus AF showed significantly decreased plasma concentrations of GOT, GPT, ALP and creatinine compared to diet

contaminated with AF group throughout the entire experimental period. The increasing of ALP, GOT and GPT levels are usually indicators of disfunction of hepatocellular damage. Similar findings were reported by Kemal *et al.* (2003) and Gokhan *et al.* (2004) who found that plasma concentrations of ALP, GOT, GPT and creatinine significantly changed in quails and broiler chicks received AF for 21-37 days of treatment, also with Gokhan *et al.* (2006) who reported that broiler chicks fed diet contaminated with AF at 1 ppm for 42 days, increased plasma concentrations of GOT, GPT, ALP as compared to control birds. Moreover, Kemal *et al.* (2003) found that birds received baker yeast at 2% with diet contaminated with AFB1 improved liver function and decreased liver enzymes. Moreover, AF-treated group showed greatly changed ($P \leq 0.05$) in all physiological traits during the second period compared to the first period of treatment. These changes showed as a decreasing in plasma biochemical and hematological parameters and increasing in liver enzymes concentrations. This result indicated that, the toxin had a cumulative effect on physiological status of the birds.

Table 4. Effects of dry baker's yeast (DBY) in feed on liver and kidney functions of quail hens fed diet contaminated with aflatoxin (AF)

Items	Treatments			
	Control	DBY (2g/kg)	AF (3mg/kg)	DBY(2g/kg) +AF(3mg/kg)
GOT (IU/L)				
Period I ¹	89.83±2.21 ^c	84.16±2.21 ^c	112.33±2.22 ^a	96.16±2.22 ^b
Period II ²	90.00±2.22 ^c	89.83±2.21 ^c	160.33±2.22 ^a	105.34±2.21 ^b
Overall	89.91±1.57 ^c	87.01±1.55 ^c	136.33±1.55 ^a	100.75±1.56 ^b
GPT (IU/L)				
Period I	14.26±1.96 ^b	14.23±1.95 ^b	20.34±1.94 ^a	16.82±1.95 ^b
Period II	14.02±1.94 ^c	13.67±1.94 ^c	31.61±1.95 ^a	20.19±1.96 ^b
Overall	14.15±0.87 ^c	13.95±0.88 ^c	25.92±0.85 ^a	18.51±0.87 ^b
ALP (IU/L)				
Period I	61.81±2.35 ^c	60.15±2.42 ^c	81.36±2.36 ^a	68.63±2.54 ^b
Period II	65.69±2.26 ^c	64.45±2.37 ^c	93.64±2.16 ^a	71.94±2.51 ^b
Overall	63.75±1.66 ^c	62.3±1.36 ^c	87.52±1.94 ^a	70.28±1.26 ^b
Creatinine (mg/dl)				
Period I	0.30±0.19 ^b	0.34±0.18 ^b	1.64±0.16 ^a	0.49±0.19 ^b
Period II	0.37±0.12 ^b	0.35±0.14 ^b	2.51±0.12 ^a	0.75±0.11 ^b
Overall	0.33±0.11 ^b	0.34±0.12 ^b	2.07±0.12 ^a	0.62±0.11 ^b

a,b,c,d Means±SE in a row with no common superscript differ significantly ($P \leq 0.05$).

¹ Period I = After 4 wks from starting of the treatment (34 wks of age).

² Period II = After 4 wks from the first period (38 wks of age).

Histopathological Examination of the Liver

Aflatoxin given at the dose of 3 mg/kg for 8 weeks caused extreme damage to the liver (Fig. 1). This damage was parallel to the changes in biochemical parameters. The aflatoxicated birds revealed pronounced histopathological changes in their livers. These changes were mainly represented by tissue degeneration and necrotic fatty vacuolation also hemorrhages and lymphocytes infiltration was evident. These results are consistent with reports of Oliveira *et al.* (2002) who reported that quail hens fed AFB1 at 100 µg/kg of diet showed hepatic cell vacuolation with fatty necrosis. Also, Gokhan *et al.* (2004 & 2006) and Karaman *et al.* (2005) found that quail and broiler chicks fed diets contaminated with AF at 1 - 205 ppm for 21 to 45 days caused extreme damage to the liver. In addition, aflatoxin caused hepatotoxicity, cellular disorganization, and hepatocyte necrosis in the Wistar rats (Baptista *et al.*, 2008). Relative weight of liver in broiler chicks fed diet containing AFB1 were significantly greater than control chicks (Arab Abousadi *et al.*, 2007).

In our experiment, the supplementation with dry baker's yeast counteracted the AF intoxication and remarkably improved and minimized the liver damage in treated birds. Histological changes were minimal with the presence of inflammatory infiltration and almost similar to control birds. These results are similar to data reported by Santin *et al.* (2003) and Arab Abousadi *et al.* (2007) who found that *Saccharomyces cerevisiae* at 1 or 2 g/kg improved relative weights of liver in broiler chicks fed diet contaminated with 125 or 500 ppb of aflatoxin. Moreover, Karaman *et al.* (2005) showed that yeast glucomannan at 1 g/kg plus 2 mg/kg AF had adverse effects of aflatoxin on the pathological changes of the liver. Also, Baptista *et al.* (2008) found that, yeast reduced the toxicity in the Wistar rats especially of liver pathology.

Behavioral Traits

Concerning the intervals or the entire period studied, basic behavioral activities (standing, sitting and walking) were significantly ($P \leq 0.05$) affected by AF diet (Tables 5). Birds fed AF alone had the highest percent spent sitting and the lowest percent spent standing compared with other groups. However, control and DBY birds showed longer walking time than birds received AF only or DBY plus AF. Also, additional behavioral activities (preening, feeding and drinking) were significantly influenced by AF. Quails fed diet contaminated with AF had more preening time and short feeding time compared to other groups. No significant differences between treatments on drinking behaviour were found. These results indicate that, aflatoxin decreased activities and vitalities of the birds.

Our results clearly showed that the supplementation with dry baker's yeast could significantly counteract some of the toxic effects of aflatoxin in quail layers. This positive healthy effect of yeast supplementation was mainly attributed to yeast cell wall mannan-oligosaccharides (MOS) which is a natural adsorbent that effectively bind aflatoxin and undesirable bacteria in the gastro-intestinal tract (Devegowda *et al.*, 1998; Schatzmayr *et al.*, 2004). In addition live yeast (*Saccharomyces cerevisiae*) was found to increase the number and height of intestinal villi over in chicks, which increase the surface of nutrient absorption (AL-Homidan and Fahmy, 2007).

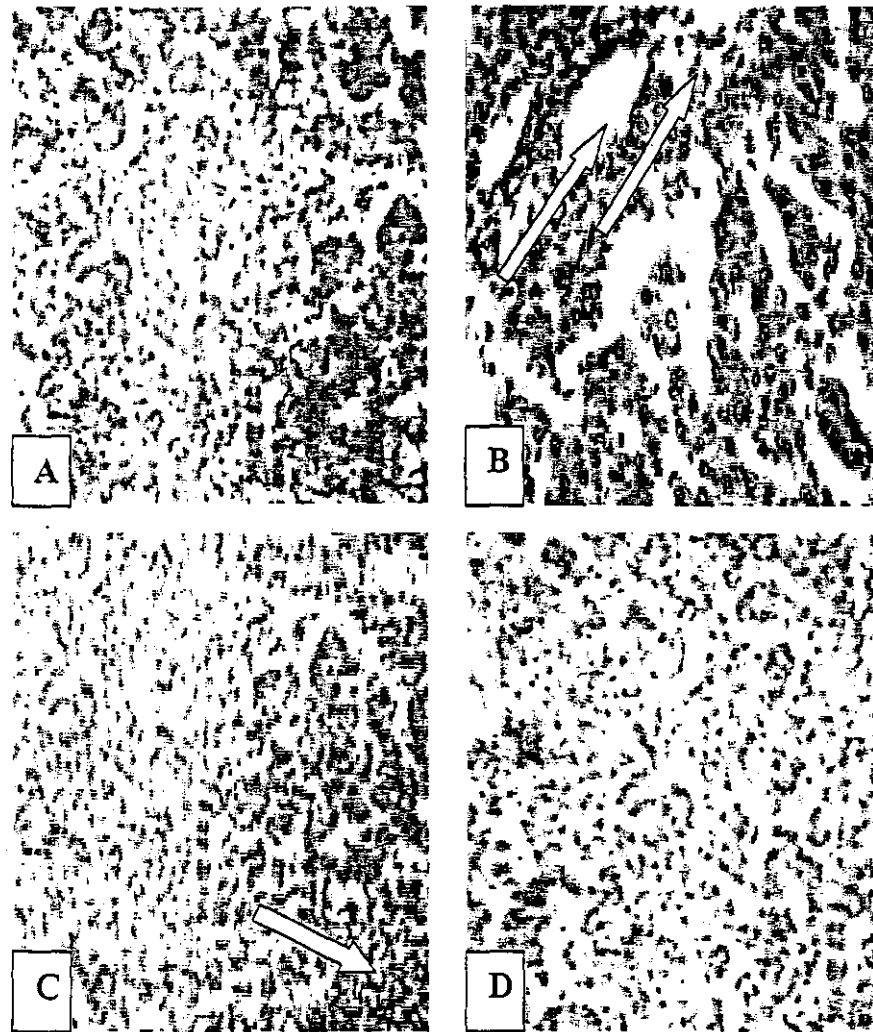


Fig. 1. Histopathological sections of the quails livers showing (A) normal liver tissue of the control group (B) degenerated liver tissue with fatty vacuolation of the toxicated group (C) liver tissue with minimal effect (inflammatory infiltration) of the group treated with toxin and dry baker's yeast (D) Intact liver tissue of the dry baker's yeast treated group.

Table 5. Effects of dry baker's yeast (DBY) in feed on some behavioral activities (%) of quail hens fed diet contaminated with aflatoxin (AF)

Items	Treatments				
	Control	DBY (2g/kg)	AF (3mg/kg)	DBY(2g/kg) +AF(3mg/kg)	
<i>Basic behavior (%)</i>					
Standing	Period I ¹	38.11±4.21 ^a	37.78±3.67 ^a	22.47±3.64 ^b	40.56±4.12 ^a
	Period II ²	40.34±3.42 ^a	41.62±4.31 ^a	20.72±4.12 ^b	35.41±3.24 ^a
	Overall	39.25±3.21 ^a	39.71±4.14 ^a	21.59±3.94 ^b	37.98±3.62 ^a
Sitting	Period I	43.71±3.37 ^c	44.19±3.37 ^c	64.61±4.22 ^a	48.51±4.35 ^b
	Period II	39.51±4.23 ^c	36.46±3.57 ^c	69.21±4.45 ^a	47.55±3.45 ^b
	Overall	41.61±4.62 ^c	40.35±3.51 ^c	66.91±3.67 ^a	48.03±3.68 ^b
Walking	Period I	18.18±3.64 ^a	18.03±3.64 ^a	12.92±3.41 ^b	10.93±4.31 ^b
	Period II	20.16±2.61 ^a	21.96±2.97 ^a	10.08±2.64 ^b	17.04±2.07 ^{ab}
	Overall	19.17±3.01 ^a	19.97±3.12 ^a	11.50±2.82 ^b	13.98±2.13 ^{ab}
<i>Additional behavior (%)</i>					
Preening	Period I	17.12±2.34 ^b	16.45±2.22 ^b	21.34 ±2.14 ^a	18.91±2.45 ^b
	Period II	20.64±2.74 ^b	19.26±2.12 ^b	25.32 ±2.67 ^a	20.43±2.27 ^{ab}
	Overall	18.87±2.03 ^b	17.85±2.47 ^b	23.33 ±2.08 ^a	19.67±2.14 ^{ab}
Feeding	Period I	24.41±2.74 ^a	25.16±2.16 ^a	18.67±2.37 ^b	23.45±3.72 ^a
	Period II	27.32±2.12 ^a	28.92±3.16 ^a	16.31±2.25 ^b	25.19±2.97 ^a
	Overall	25.86±2.22 ^a	27.02±3.02 ^a	17.49±2.35 ^b	24.32±2.38 ^a
Drinking	Period I	4.19±1.48	4.19±1.21	4.87±3.22	4.94±1.36
	Period II	3.75±1.22	3.87±1.75	2.98±1.36	3.75±1.64
	Overall	3.95±1.34	4.02±1.98	3.91±1.09	4.34±1.28

a,b,c,d Means±SE in a row with no common superscript differ significantly ($P \leq 0.05$).

¹ Period I = average 4 wks from starting of the treatment (31-34 wks of age).

² Period II = average 4 wks after the first period (35-38 wks of age).

CONCLUSIONS

The results indicated that aflatoxin in a Japanese quail layers diet at a level of 3 mg/kg of feed had negative effects on all productive, physiological and behavioral traits as compared with control during the experimental intervals. Also, showed that, all studied traits during the second experimental period were affected more than the first period. This clearly indicated that, the toxin had a cumulative effect on productive and physiological performance of the birds. On the other hand, the addition of DBY only at 2 g/kg to quail layer diet enhanced some traits but had no significant differences compared to control. Moreover, the addition of DBY to laying quail's diet containing 3 mg/kg AF significantly improved all studied traits. Our findings strongly suggest that, the supplementation of laying quail's diet with the *Saccharomyces cerevisiae* had prophylactic effect on the performance of AF- treated birds via minimizing the harmful effects of toxin.

ACKNOWLEDGMENTS

The authors would like to thank Prof. Dr. Mohamed E. Mady, Department of Animal Production, Faculty of Agriculture, University of Suez Canal for his efforts during this study.

REFERENCES

- AL-Homidan, A. and M.O. Fahmy, 2007. The effect of dried yeast (*Saccharomyces cerevisiae*) supplementation on growth performance, carcass chemical analysis, immunity, ileum villi heights and bacterial counts of broiler chickens. Egypt. Poult. Sci., 27: 613-623.
- Anderson, R.A., 1983. Detoxification of aflatoxin contaminated corn. In: Diener, U; Asquith, R and Dickens, J (Eds.), Aflatoxin and *Aspergillus flavus* in corn. Souther Cooperative Services Bulletin 279. Alabama Agricultural Experimental Station, Auburn University, Auburn, AL. 87-90.
- AOAC, 1995. Official methods of analysis. 16th ed. Vol (II), Chapter 49 (Natural toxins), Peter M. Health Protection Branch, Canada.
- Arab Abousadi, M.L., E.L. Rowghani and M.H. Ebrahimi, 2007. The efficacy of various additives to reduce the toxicity of aflatoxin B1 in broiler chicks. Iranian Vet. Res. J., University of Shiraz, 8: 144-150.
- Bancroft, J.D. and A. Stevens, 1990. Theory and practice of histology techniques. 3rd ed. Churchill Livingstone, London.
- Baptista, A.S., A.L. Abdalla, C.L. Aguiar, S.B. Ana Angelita, M. David, A.C. Zampronio, D.S. Pires, E.M. Glória, M.A. Calori-Domingues, J.M. Walder, M.R. Vizioli and J. Horii, 2008. Utilization of diets amended with yeast and amino acids for the control of aflatoxicosis. World J. Microb. & Biotech., 24: 2547-2554.
- Betina, V., 1989. Aflatoxins, sterigmatocystins and versicolorins. In: Mycotoxins: Chemical, Biological and Environmental Aspects. Elsevier, Amsterdam-Oxford-New York-Tokyo. 115-50.
- Broomhead, J.N., D.R. Ledoux, A.J. Bermudez and G.E. Rottinghaus, 2002. Chronic effects of fumonisin B1 in broilers and turkeys fed dietary treatments to market age. Poult. Sci., 81: 56-61.
- Chang, C.F. and P.B. Hamilton, 1982. Experimental aflatoxicosis in young Japanese quail. Poult. Sci., 61: 869-874.
- Devegowda, G., M.V. Radu, A. Nazar, H.V. Swamy, 1998: Mycotoxin picture worldwide: Novel solutions for their counteraction. Proceedings of Alltech's 14th Annual Symposium: 241-255.
- Doerr, J.A. and M.A. Ottinger, 1980. Delayed reproductive development resulting from aflatoxicosis in juvenile Japanese quail. Poult. Sci., 59: 1995-2001.
- Edds, G.T. and R.R. Bortell, 1983. Biological effects of aflatoxin in poultry. In: Diener, UL; Asquith, RL and Dickens, JW (Eds.), Aflatoxin and *Aspergillus flavus* in corn. Souther Cooperative Services Bulletin. 279. Alabama Agricultural Experimental Station, Auburn University. AL. 55-61.
- Glahn, R.P.; K.W. Beers, W.G. Bottje, R.F. Wideman, W.E. Huff and W. Thomas, 1991. Aflatoxicosis alters avian renal function, calcium and vitamin D metabolism. J. Toxicol. Environ. Health. 34: 309-321.

- Gokhan E., C.L Bilal, K.G. Berrin, A. Ayhan, N.K. Ayse and B. Latife, 2004. Evaluation of aflatoxin toxicity in Japanese quails given various doses of hydrated sodium calcium aluminosilicate. *Bull Vet Inst. Pulawy*. 48: 511-517.
- Gokhan E., E. Dinc, A. Mehmet, K. Erdal, O. Meral and O. Zafer, 2006. Efficacy of dietary sodium bentonite against subchronic exposure to dietary aflatoxin in broilers. *Bull Vet. Inst. Pulawy*. 50: 107-112.
- Hawkey, C.M. and T.B. Dennett, 1989. A color atlas of comparative veterinary hematology. Wolf Publishing Limited, London, England.
- Johri, T.S., R.C. Agrawal and V.R. Sadagopan, 1990. Effect of low dietary levels of aflatoxin on laying quail (*Coturnix coturnix japonica*) and their response to dietary modifications. *Indian J. Anim. Sci.*, 60: 355-359.
- Karaman, M., H. Basmacioglu, M. Ortatati and H. Oguz, 2005. Evaluation of the detoxifying effect of yeast glucomannan on aflatoxicosis in broilers as assessed by gross examination and histopathology. *Br. Poult. Sci.*, 3: 394-400.
- Kemal, C., D. Muzaffer, S. Türker, 2003. Reduction of toxic effects of aflatoxin B1 by using baker yeast (*Saccharomyces cerevisiae*) in growing broiler chicks diets. *R. Bras. Zootec.*, 32: 615-619.
- Kubena, L.F., R.B. Harvey, W.E. Huff, D.E. Corrier, T.D. Phillips and G.E. Rottinghaus, 1990. Efficacy of a hydrated sodium calcium aluminosilicate to reduce the toxicity of aflatoxin and T-2 toxin. *Poult. Sci.*, 69: 1078-1086.
- Leeson, S., G. Diaz and J.D. Summers, 1995. Poultry metabolic disorders and mycotoxins. (1st. Edn.), Canada University Books, Ont., 248- 279.
- Miazzo, R., C.A. Rosa, E.C. DeQueiroz, C. Magnoli, S.M. Chiaccnieva, C. Palocio, M. Saenz, A. Kikot, E. Basaldella and A. Dalcero, 2000. Efficacy of synthetic zeolite to reduce the toxicity of aflatoxin in broiler chicks. *Poult. Sci.*, 79: 1-6.
- Muzaffer, D., C. Kemal and O. Ferda, 2003. Effects of vitamin A supplementary in the feed to reduce toxic effects of aflatoxin B1 on Japanese quails (*Coturnix coturnix Japonica*). *Int. J. Poult. Sci.*, 2: 174-177.
- National Research Council, 1994. Nutrient Requirements of Poultry. 9th rev. ed. National Academy Press, Washington, DC.
- Ogido, R., C.A. Oliveira, I.D. Ledoux, G.E. Rottinghaus, B. Correa, P. Butkeraitis, T.A. Reis, E. Goncales and R. Albuquerque, 2004. Effects of prolonged administration of aflatoxin B1 and fumonisin B1 in laying Japanese quail. *Poult. Sci.*, 83:1953-1958.
- Oliveira, C.A., J.F. Rosmaninho, P. Butkeraitis, B. Correa, T.A. Reis, J.L. Guerra, R. Albuquerque and M.E. Moro, 2002. Effect of low levels of dietary aflatoxin B1 on laying Japanese quail. *Poult. Sci.*, 81:976-980.
- Pariat, S., 2003. Biological suppression of aflatoxicosis in Japanese quail (*Coturnix coturnix japonica*) by dietary addition of yeast (*Saccharomyces cerevisiae*). *Research in Vet. Sci.*, 71: 207-211.
- Raper, K.B. and D.I. Fennel, 1965. the genus *Aspergillus*, Williams & Wilkins, Baltimore. 686.
- Richard, J.L., J.A. Bennett, B.F. Ross and B.E. Nelson, 1993. Analysis of naturally occurring mycotoxins in feed stuffs and food. *J. Anim. Sci.*, 71: 2663-2574.
- Santin, E.I, A.C. Paulillo, E.L. Krabbe, A.C. Alessi, W.J. Poiveiro, A. Maiorka, 2003. Low level of aflatoxin in broiler at experimental conditions use of ceil wall yeast as adsorbent of aflatoxin. *Brazil Arch. Vet. Sci.*, 8: 51-55.

- SAS Institute, 1998. SAS statistical guide for personal computer, SAS Institute Inc. Cary, NC.
- Sawhney, D.S., D.V. Vadehra and R.C. Baker, 1973. Aflatoxicosis in the laying Japanese quail (*Coturnix coturnix japonica*). Poultry Sci., 52: 465-473.
- Schatzmayr, D., S. Nitsch, E.M. Binder, M. Taubel, A. Loibner and G. Schatzmayr, 2004. Detoxification of mycotoxins. World Nutrition Forum, 128-129.
- Stanley, V.G., M. Winsman, C. Dunkley, T. Ogunleye, M. Daley, W.F. Krueger, A.E. Sefton and A. Hinton, 2004. The impact of yeast culture residue on the suppression of dietary aflatoxin on the performance of broiler breeder hens. J. Appl. Poultry Res., 13: 533-539.
- Tietz, N.W., 1982. Fundamental of clinical chemistry. Edition by Norbert Sanrdrs Company, Philadelphia, USA.
- Tollba, A.A. and A.H. El-Nagar, 2008. Increasing stocking density of Egyptian local hens by: 1-Antioxidants and live yeast. Egypt. Poultry Sci., 28: 575-598.
- West, S., R.D. Wyatt and P.B. Hamilton, 1973. Improved yield of aflatoxin by incremental increases in temperature. Appl. Microbiol. 25: 1018-1019.
- Winderobe, M.M., 1965. Clinical Hematology. Lea and Febiger, Philadelphia, USA.
- Yildirim, S. and S. Parlat, 2003. Effects of dietary addition of live yeast (*Saccharomyces cerevisiae*) on hatching traits, testis and ovary weights of Japanese quail (*Coturnix coturnix japonica*) in aflatoxicosis. Arch. Geflügelk., 67: 208-211.

تأثير استخدام خميرة الخباز الجافة على تثبيط تأثيرات الأفلاتوكسين في العليقة على بعض الصفات الإنتاجية والفسولوجية والسلوكية في السمان الياباني البيضاء

حسن عبد الغفار خليل¹، محمد عبد الرزق²

1- قسم الإنتاج الحيواني، كلية الزراعة، جامعة قناة السويس، الإسماعيلية، مصر، 2- قسم الميكروبيولوجي، كلية العلوم، جامعة قناة السويس، الإسماعيلية، مصر

أجريت هذه الدراسة لمعرفة تأثير خميرة الخباز الجافة (*Saccharomyces cerevisiae*) على تثبيط للتأثيرات السامة للأفلاتوكسين في عليقة السمان الياباني البيضاء من 30 إلى 38 أسبوعاً من العمر. استخدمت 120 سمكة قسمت عشوائياً إلى أربع مجاميع تجريبية: ثلاث معاملات ومجموعة كنترول (30 طائراً لكل مجموعة وكل مجموعة وزعت على ثلاث مكررات). للمجموعة الأولى كانت مجموعة المقارنة (الكنترول) والتي غذيت على العليقة الأساسية، أما الثانية فغذيت على العليقة الأساسية مضافاً إليها الأفلاتوكسين بمعدل 3 ملليجرام/كجم علف، والمجموعة الثالثة فغذيت على العليقة الأساسية مضافاً إليها خميرة الخباز الجافة بمعدل 2 جرام/كجم علف، أما المجموعة الأخيرة فغذيت على العليقة الأساسية مضافاً إليها مزيج من خميرة الخباز الجافة والأفلاتوكسين بالمحتلين السابقين. تم تسجيل وزن الجسم ومعدل النفوق خلال فترة التجربة. كما تم تسجيل معدل إنتاج البيض، عدد البيض، وزن البيض، كتلة البيض، استهلاك العلف، الكفاءة الغذائية خلال فترتين من مرحلة إنتاج البيض. وبعد 4 و 8 أسابيع من بداية المعاملة تم ذبح 12 طائراً من كل مجموعة تجريبية بغرض الحصول على الدم، وكذلك الكبد، لإجراء بعض القياسات الفسيولوجية والنحصات الهستولوجية. كما تم تقدير بعض القياسات الهيماتولوجية في الدم (تركيز الهيموجلوبين، نسبة الهيماتوكريت، عدد كرات الدم الحمراء والبيضاء) بالإضافة إلى قياس مستوى تركيز كل من البروتين الكلى، الألبومين، الجلوبيولين، الدهون الكلية، الكالسيوم، الفوسفور، إنزيمات الكبد، الكرياتينين وذلك في بلازما الدم. بالإضافة إلى تسجيل بعض الصفات السلوكية للطيور خلال فترة التجربة.

وقد أكدت النتائج أن للأفلاتوكسين تأثيرات سلبية على الصفات الإنتاجية والفسيولوجية والسلوكية خلال فترتي الدراسة. حيث سجلت الطيور المغذاة على عليقة الأفلاتوكسين أقل القيم لمعظم الصفات المدروسة خلال فترة التجربة. كما أوضحت النتائج أن إضافة خميرة الخباز الجافة إلى العليقة الملونة بالأفلاتوكسين لها تأثيرات إيجابية وملحوظة على خفض سمية الأفلاتوكسين، حيث سجلت الطيور المغذاة على عليقة مضاف إليها الخميرة وملوثة بالأفلاتوكسين تحسناً معنوياً في معظم الصفات المدروسة مقارنة بمجموعة الأفلاتوكسين. كما أدى إضافة خميرة الخباز الجافة فقط إلى العليقة إلى تحسين في معظم الصفات المدروسة مقارنة بمجموعة الكنترول ولكن دون ظهور فروق معنوية. كما أشارت النتائج أن لفترتي الدراسة تأثيراً معنوياً على معظم الصفات المدروسة خاصة في مجموعة الأفلاتوكسين.

وخلاصة هذه الدراسة تشير إلى أن إضافة خميرة الخباز الجافة بمعدل 2 جرام/كجم علف لها تأثير وقائي على أداء الطيور المعاملة بالأفلاتوكسين وذلك عن طريق تقليل التأثيرات الضارة لسمية الأفلاتوكسين.