

HEMATOLOGICAL AND BIOCHEMICAL STUDIES ON CATTLE THEILERIOSIS WITH SPECIAL REFERENCE TO ITS EFFECT ON SOME ANTIOXIDANT AGENTS

Amira M.M. Metwally , Soad S.Belah

Animal Health Reasارش Instit .,Banha Vet Lab .,Tanta Vet Lab

ABSTRACT

The goal of the present study was to investigate the effect of cattle theileriosis on general health condition and some haematological and biochemical parameters specially Ascorbic acid and vitamin E as a model for studying the blood oxidative status in parasitized cattle . A total number 140 cows were subjected to the study their age ranged from 6 months to over 5 years belonged to some private farms in different localities at Kalubeia governorate ,all animals were examined clinically showed 46 suspected cases (30.7%) which had signs of theileria infection and the laboratory parasitological examination confirmed the infection with theileria annulata the rest of the animals were proved healthy and used as control .The affected cows had high body temperature (40-41C),enlarged superficial lymphnodes ,anorexia ,congestion of mucous membranes and increased respiratory rates .In advanced cases of the disease signs of anemia ,general weakness in addition to presence of ticks on animal body . The study cleared that animals at age of 6 months to one year have a higher rate of infection (33.3%) followed by the age of 1-3 years (30%), 3-5 years (23.3%) and finally over 5 years (8%). Hematological investigation of the affected animals proved presence of anemia represented by significant decrease of total erythrocytic count ,haemoglobin concentration and packed cell volume .The leukogram showed that there was leukocytosis as a result of neutrophilia ,lymphocytosis and monocytosis . The result of evaluation study of chain -breaking antioxidants vitamin E and ascorbic acid revealed significant decrease of these vitamins in diseased animals compared with control . Concerning with biochemical changes the infected animals showed significant decrease in total protein, albumin and glucose level .Activities of serum transaminases (AST,ALT) total bilirubin ,urea and creatinine showed significant increase .

INTRODUCTION

Tropical theileriosis is tick borne disease of cattle caused by *Theileria annulata* infection appears to be endemic in Egypt consider one of the major health problems of live stock (*Shkap et.,al 2003 and Aktas et.,al 2004*). The disease is amajor programs in many parts of the middle east and Asia where about 200 millon cattle are said to be at risk of infection (*Bakheit and Latif 2002*).

Bovine theileriosis clinically manifested by marked fever ,swelling of superficial lymph nodes ,inappetance ,tachycardia ,dyspnea and general weakness (*Omer et.,al 2003*) the mains symptoms of this disease is anemia (*Abdel-Rahman et.,al 1989*).Studies of (*Forsyth et., al 1999*) had represented anew view on the destructive effect on the parasite on the host organs and tissue

Antioxidant vitamins such as E.Cand A protect the cell from damage by free oxygen radical generated as aresult of parasitism (*Medzyavichyus et.,al1989*) and (*Smith 1989*). Vitamin C status of ruminants may be important in relation to their health and disease. Ascorbic acid play an important role as an antioxidant (*Kanter 1998*). It has also been suggested to be of value in alleviating both physiological and pathological stress (*Hemingway1991*). More over ,the interaction between antioxidant vitamin Cand E was investigated and it was reported that there is asparing effects of vitamin C on vitamin .E (*Miller et., al 1993*) . The present study aimed to focus light on this disease ,its clinical signs ,age susceptibility ,the changes of some hematological blood biochemical component and alteration of antioxidant agents vitamin Eand ascorbic acid in response to cattle theileriosis.

MATERIALS AND METHODS

1-Animals:

The present study was carried out on 140 caws aged from 6 months to over 5 years old collected from different private farms in different localities at Kalubeia governemate during summer season .The animals were clinically examined for signs of health and disease .special care to body temprature ,corneal opacity and wasting according to the method described by (*Radostits et., al 2002*). The animals divided into two groups .the first consisted of 94 apparantly healthy animals (free from blood parasite after blood examination)and kept as control group .The second consisted of 46 animals suffered from signs of the disease during blood examination of these animals .besides presence of ticks on their body .

2- Samples :

Samples were taken from animals as follow:

- a- Thin blood smears were individually prepared from superficial ear vein ,fixed and stained with Giemsa stain for detection of blood parasites microscopically according to (*Feldman et.,al 2000*).
- b- Aspirated smears were also taken from superficial enlarged lymph nodes and examined according to (*Marquardt et.,al 2000*).
- c- Two blood samples were collected from jugular vein from each examined animals in dry sterile centrifuge tubes the first blood sample was collected with anticoagulant (Sodium salt of EDTA) and used for hematological studies according to (*Feldman et.,al 2000*). the second sample was collected in plain centrifuge tube for serum biochemical investigation .Serum total proteins (*Peters1968*) albumin (*Drupt 1974*) serum globulins were calculated ,glucose

(Trinder 1969) total bilirubin (Weigl 1975), aspartate aminotransferase (AST) alanine amino transferase (ALT) activities (Reitman and Frankel 1957) urea (Fossati et.,al 1980) as well as creatinine (Seeling and Wust 1969), blood serum levels of ascorbic acid and vitamin E were determined according to (Omaye et.,al 1979) and Martin 1964) respectively

d- All data were subjected to statistical analysis by stander T-test according to (Tamhane and Dunlop 2000).

RESULTS

1-Clinical finding:

Diseased animals were found invested with ticks in preneal ,flank and neck regions .Clinical examination revealed rise in body temperature .enlargement of superficial lymph nodes ,weakness ,anorexia nasal discharge ,lacrimation which sometimes reach corneal opacity and tachycardia .

2-aboratory finding:

Theileria infected cattles were identified by examination of blood smear which revealed the presence of intracellular signet ring theileria species parasites .The results of the study dealing with parasitological and blood biochemical parameters were illustrated in tables as follow.

Table (1): The Prevalence of T. annulata infection among Cattle's in Kalubeia governarate.

Examined animals	No	No of infected	Infection %
Apparently healthy	94	0	0 %
Suspected disease	46	43	93.4
Total	140	43	30.7

Table (2): The Prevalence of *T. annulatus* infection among Cattle Of different age.

Age group Month	No of examined	No of infected	Infection %
6m – 1year	45	15	33.3
1 – 3 year	40	12	30
3- 5 year	30	7	23.3
Over 5 years	25	2	8

Table (3): Effect of *T. annulatus* infection among Cattle On RBCs , Hb and PCV.

Groups	RBCs mil/cm ³	Hb g/dl	PCV%
Control 2	8.55±	11.26±	33.49±
	0.05	0.05	0.07
Thileria infected cattle	6.89±***	8.46±***	28.44±***
	0.12	0.14	0.028

* = significant at (p < 0.05)

*** = significant at (p < 0.001)

Table (4): Effect of *Thileria* infection on WBCs and differential leukocyte count on cattle.

Parameters Groups	WBCs X 10 ³ ml	Neutrophil	Lymphocyte	Monocyte	Eosino	basophil
Control	9.55±	3.06±	5.41±	0.58±	0.55±	0.17±
	0.10	0.06	0.08	0.01	0.1	0.01
Thileria infected cattle	15.64±	6.78±	7.58±	0.71±	0.49±	0.17±
	0.88 ***	0.57 ***	0.33 ***	0.01***	0.01***	0.01 ***

* = significant at (p < 0.05)

*** = significant at (p < 0.001)

Table (5): Effect of Thileria infection On vitamin C and vitamin E levels on cattle.

Parameters Group	Vit. C (mg/dl)	Vit. E (mg/ dl)
Control	0.16 ± 0.001	5.91±0.06
Thileria infected cattle	0.10±0.03*	3.54± 0.10*

* = significant at (p< 0.05)

*** = significant at (p< 0.001)

Table (6): Effect of Thileria infection on total protein, albumin , globulin (gm/dl) and albumin/globulin ratio on cattle.

PARAMETERS Group	Total protein	Albumin	Globulin	Albumin glo bulin
Control	7.60±	4.23±	3.37 ±	1.26±
	0.06	0.06	0.10	0.05
Thileria infected cattle	5.42±	2.61±	2.81±	0.93±
	0.12	0.11	0.10	0.06

Table (7): Effect of Thileria infection On liver function of cattle.

PARAMETERS Group	Glucose mg/dl	Blood urea nitrogen mg/dl	Creatinine mg/dl	Total bilirubin mg/dl	ASTu/l	ALTu/l
Control	60.70±	30.52±	1.37±	0.98±	57.50±	20.60±
	0.76	0.69	0.05	0.01	0.96	0.70
Thileria infected cattle	***	***	***	***	***	***
	51.70±	40.50±	1.96±	1.31±	71.60±	34.90±
	0.90	0.98	0.08	0.09	1.01	1.11

*** = significant at (p< 0.001)

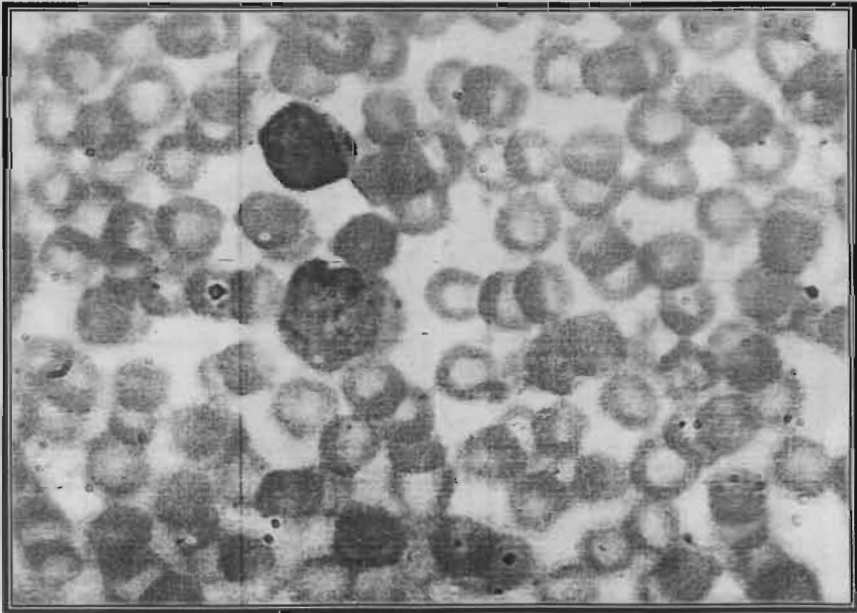
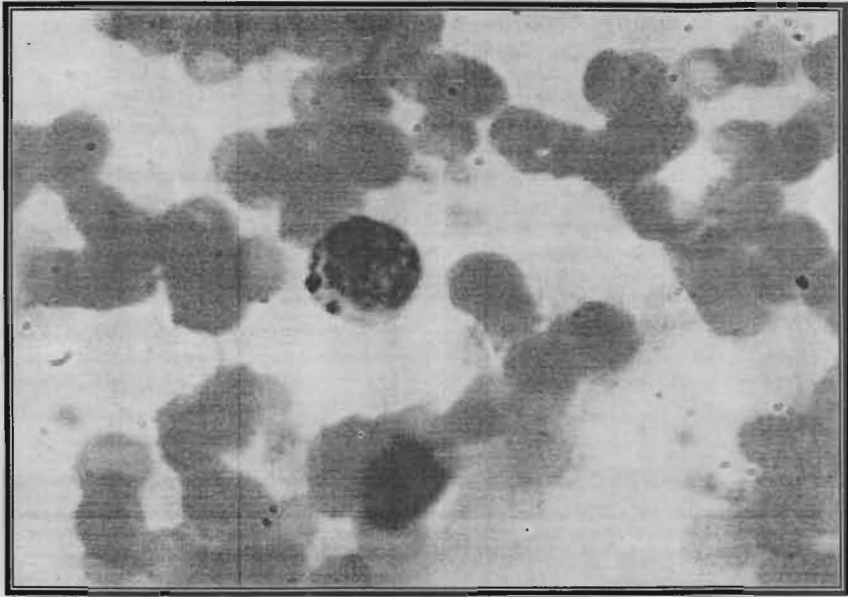


Fig (1): Koch's bullet bodies in Monocyte of infected cattle.

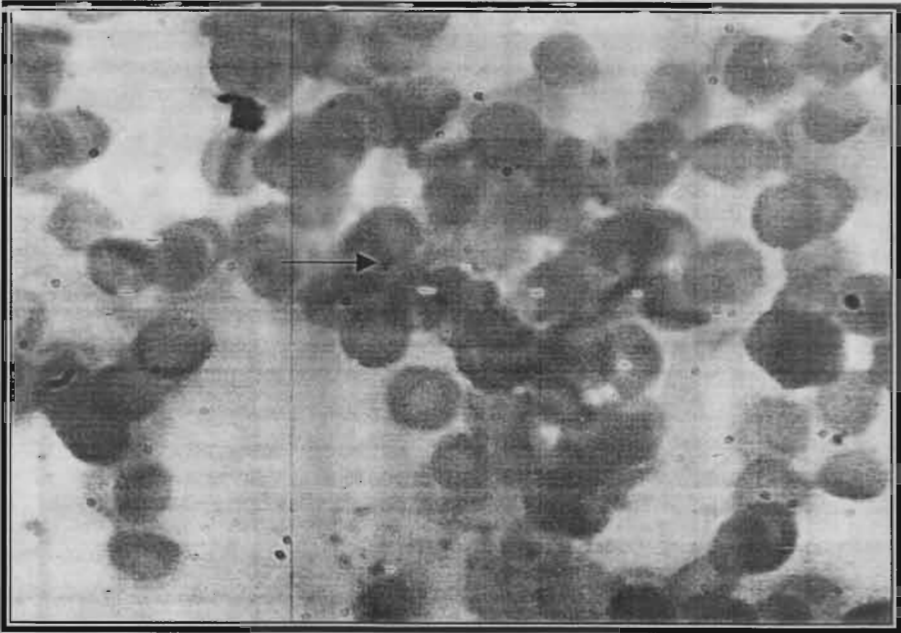
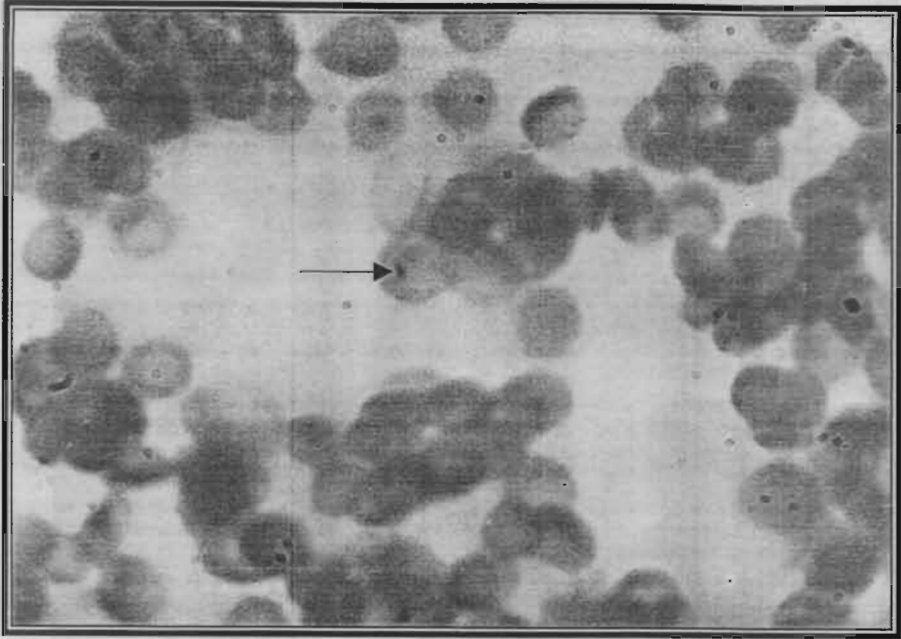


Fig. (2): Merozoite schizont of theileria in RBCs of infected cattle.

DISCUSSION

Diagnosis of clinical cases of acute theileriosis is fairly simple fever accompanied by enlargement of superficial lymph nodes during tick season is strongly suggestive of the disease (*Radostit et.,al 2002*). Blood films and lymph node smears revealed the presence of different forms of intra-erythrocytic trophozoites (fig 2) schizont(Kochs blue bodies) were observed in lymph nodes and monocytes (fig 1)these finding parallel to those described previously by (*Rodostits et.,al 2002*) and (*Ramazan and Uslu 2006*). Examination of suspected infectious animals revealed that 30.7%out of 140animals were infected with theileriosis (table 1)this result was similar to (*Abd-El-Raof et.,al 2000*). (*El-masry et.,al 2006*) they recorded that the incidence of theileriosis among cattle were 33.66%,29.3% respectively. However higher prevalence rates were reported by (*Song and Sang 2003*). (*Inoue et.,al 2001*) they detected theileriosis among cattle were 50.4% ,67.8% respectively. This difference may be attributed to the difference in localities and species of examined animals . Concerning the suseptability of age to theileriosis present data revealed that calves with age of 6 months to 1 yearwere highly susptible to theileriosis 33.3%which is nearly equal to that from (1-3) years 30%they decreased at age from (3-5) years 23.3%to reach the lowest infection rate at animals over 5years is 8%(table 2) which may be attributed to age resistance or previous infection and presence of a sort of immunity nearly similar results were obtained by (*El-masry et. al 2006*). Around this point (*Abd-El-Raof et. al ,2000*) reported that buffaloes with age of 6 months to 5 years were highly susptible to theileriosis 54.91%followed by those over 5 years old (15.79%), this variation may be attributed to the species of examined animals .Concering the changes in haemogram parameters ,in theileria annulata infected caws (table 3) showed that there was anemia as a result of significant decrease in erythrocytic count, Hb and PCVwhen compared with control group this result came in accordance with those of (*Omer et al,2002*).

(*Emam and Al-Kabbany 2004*) and (*El-masry et al 2006*) such changes could be due to the destructive effect of parasites on erythrocytes and failure of bone marrow to produce enough erythrocytes in response to the toxic material to compensate such losses (*Radostitis et.al,2002*), (*Shiono et. al,2004*) and (*Ramazan and Uslu 2006*).

Further,more intraerythrocytic parasites metabolize hemoglobin and produce O₂ which cause oxidative stress as a result, the free O₂ and H₂O₂ increase lipid peroxidation cause oxidation of sulfhydryl group of the globin chain and damage of erythrocyte cell membrane with the subsequent removal of affected erythrocytes by active macrophages (*Stocker et.al, 1986*) and (*Attia 2001*). This was emphasized by a number of studies which demonstrated that the amount of reactive oxygen radicals which cause lipid peroxidation are increased in the cells of hosts infected with different species of parasites there by causing cell and tissue damages (*Smith 1989*) and (*Sarin et.al,1993*). The leukogram in the present study (table 4) illustrated that there was a leukocytosis as a result of neutrophilia, lymphocytosis and monocytosis in the infected cows in comparison with control. our results agreed with those documented by (*Stockham and Scott 2002*), (*Selim and Saadia 2007*). On the other hand our results were partially in contrary with the result obtained by (*Stochham et.al,2000*) who found only lymphocytosis. (*Omran and EL-Kholany 2003*) documented picture of stress leukogram. The interaction between antioxidant vitamin C and E was investigated (table 5) and asparing effects of vitamin C on vitamin E as well of vitamin E on vitamin C were recorded (*Tanaka et.al,1979*). The significant decrease in serum vitamin levels agree with (*Abdellah et.al,2006*) these attributed to the assimilation of these vitamins by the continuous release of reactive oxygen species this was in accordance with previous study (*Miller et.al,1993*) which declared that stress, disease and

induction of immune response increase requirement for nutrients including vitamins E, A and C, where vitamin C and E are chain – breaking antioxidants that protect the cells from oxidative damage . On the other hand additional supplementation of theileria infected animals with source of vitamins to over come the oxidative stress and to avoid possible complication of vitamin E and C deficiencies .Previous studies have shown that low level of tocopherol (chemical ,active form of vitamin E) represent a significant risk factor for clinical mastitis and other types of infection of affected animals (*Weimann 1991*).

Dealing with changes in total protein in present study (table 6 indicated a high significant decrease in albumin level in infected cows. (*Sandhu et.al,1998, El Swalhy 1999 and Salem and Mohran 2003*) attributed marked reduction in albumin level to the harmful effect of the parasite on the liver and consequently reduction of albumin synthesis in the same time our result revealed hypoproteinemia agreed with (*Omer et.al,2003*). Anoxia as well as intestinal troubles and diarrhea may be responsible such reduction (*Kaneko 1997*) and (*Thomas,2000*). Serum glucose in cows infected with theileria annulata indicated high significant decrease when compared with control group this result supported by *Selim and Saadia, 2007 and El masry et.al, 2006*). This can be attributed to the effect of the parasite on the liver (*Smith 1996*) which may inhibit gluconeogenesis or glycogen storage which are essential for the maintenance of blood glucose (*Tenant 1997*). Similarly serum AST and ALT enzyme besides total bilirubin values in this study revealed significant elevation in infected cows when compared with healthy control similar results were obtained by (*Omran and EL-Kholany 2003*), (*Salem and Mahran 2003*), (*Omer et.al,2003b*) and (*ELmasry et.al. 2006*) referred such increase to the degenerative changes of the liver in addition hemolysis of erythrocytes during thieleria infection. However

increase serum urea and creatinine levels explained by *Stockhan and Scott 2002* who attributed hemolytic disorder characterized by proximal tubular degeneration leading to renal insufficiency. However alteration on liver and kidney function obtained in present study were relevant with *Abou-ELhasan 1997, Singh et.al, 2001* they showed several and different macroscopic and microscopic lesions in liver and kidney of theileria infected calves resulting in hepatic and renal damage due to excessive production of cytokines.

In conclusion the present study proved that ticks are very dangerous in animal house and must be eradicated specially during summer season also cattle theileriasis was accompanied by blood picture changes impairment of liver and kidney function beside the reduction of chain breaking antioxidants levels ascorbic acid and vitamin E. We advice application of specific antiprotozoal drugs with source of vitamin C and E to overcome the oxidative stress associating the infection and to avoid the possible complications of secondary vitamin deficiency. finally periodically examination of cattle for control and prevent the adverse effect of the parasites.

REFERENCES

- *Abdellah M.R; A.M. Abd EL-Fatah ; Ghada A.AbouEL- Ella and M.F.Raghib (2006):* antioxidants Ascorbic acid Chain –breaking and vitamin E. in response to cattle theileriosis Assuit Vet Med .J . Vol 52 NO.108 January.
- *Abo EL-Hasan L.A.M (1997):* Clinicopathological study of theileriosis New Vally .M. Vet .Sci .Thesis Fac. Vet. Med. Assiut. Univ.
- *Abd-EL-Raof ,Y.M.; Ramadan ,M.Y and EL-Sawalhy .A.A (2000):* Clinical and some biochemical changes associated with theileriosis in buffaloes . J.Vet Med Res ., 2 (2):75-84.

- **Abdel-Rahman MSF ;M.M.A.K , EL-Nimr ,M.M and EL-Bahy, M.M (1989):** Areview on the work done for the preparation of a vaccine against theileria annulata Egyptian strain . J. Egypt Vet Med .Ass. 49:529-540.
- **Aktas ,M.dUMANI .N. and Angin M (2004):** Cattle infestation by Hyalomma ticks and prevalence of theileria in Hyalomma species in the east of Turkey . Vet .Parasitolo. Jan . 5. 119(1) :1-8.
- **Attia, H. (2001):** Haematological and biochemical response to haemolytic anemia of clinical babesiosis in farm animals Zag. Vet. J. 28 (2): 113-119.
- **Bakheit ,M.A and Latif ,A.A (2002):** The innate resistance of kenana cattle of tropical theileriosis (theileria annulata infection) in Sudan . Annals of the New York Academy of Science ,969: 159-163
- **Drupt .F.(1974):** Colorimetric method for determination of albumin Pharm .Bio ,9, 777.
- **Emam ,E.F.and AL-Kabbany ,M.F.(2004):** Field trail for treatment of Babesiosis in native cattle . Zag .Vet .J (2): 163-171.
- **El-Masry ,N.M.; EL-Dessouky S. A and Abo-Elkheir S.A (2006):** Parasitological and biochemical studies on cattle theileriosis at Dakhlia Governorate with special references to its control Assuit .Vet Med J. 52 (109): 1650-178.
- **EL-Sawalhy ,A.A(1999):**Veterinary infectious diseases 2nd Ed AL-Ahram distribution Agency ,Egypt ,P 401-409.
- **Feldman ,B.F;Zinkl,J.G and Join N.C (2000):** Schalm' s Veterinary hematology 5th Ed.,Lippincott Williams and Wilkins .AWolters Company , Philadelphia ,Baltimore New York ,London ,Buenos Aires,Hong Kong .Sydney Tokyo.
- **Fossati .P;Prencipe,L.and Berti G(1980):** Enzymatic determination of uric acid Clin. Chem 26(2):227-231.

- **Forsyth ,L.M.;Minns ,F.C.;Kirvar E.; Adamson ,R.E.;Hall.F.R.: Mcorist ,S;Broun C.G and Perston ,P.M (1999):** Tissue damage in cattle infected with theileria annulata accompanied by mastitis of cytokine producing shizont infected mononuclear phagocytes . J.Comp. Pathol. 120:39-57.
- **Hemingway ,D(1991):** Vitamin C in prevention of neonatal calf diarrhoea Can Vet .J .32: 184.
- **Inoue ,M; Van Nguyen ,D ;Meas ,S ;Ohashi ,K ;Sen .S ; Sugimoto C. and Onuma M (2001):** Survey of theileria parasite infection in cattle in Cambodia and Vietnam using piroplasm surface protein gene – specific polymerase chain reaction . J .Vet .Med Sci .63 (10)0 1155-1157 .Related articles ,links.
- **Kanter, M. (1998):** Free radicals exercise and antioxidant supplementation . Proc .Nutr .Soc .57:9-13.
- **Kaneko J.T(1997):** serum proteins and Dysproteinemias in ; clinical Biochemistry of Domestic animals.Eds . kaneko; JJ; Harvey J. W and Bruss: M.I.; sthED. Academic Press; London . PP. 117-138.
- **Martine, R. (1964):** Method for determination of vitamin E(total tocopherol) in serum . Clin. Chem. 10:1078-1086.
- **Medzyavichyus AK,B.V.Y. Drebitsken, G.A,Mozalene E. E. Bebravicivs V,Drebickiene G and Mozalieme.E (1989):** Effect of vitamin A and C on immunity of Trichuriasis in piglets under industrial farming conditions Acta Parasitol Lit 23; 115-129.
- **Miller, J; Brzeziaska-Slebedzinka E. and Madson E.C (1993):** Oxidative stress, antioxidants and animal function J .of Dairy Sci 6 (7): 2812-2823.
- **Marquardt, W.C.; Demarre ,R.S and Grieve ,R.B (2000):** Parasitology and vector biology . 2nd Edition Harcot Academic Press .Son Diag , London , Boston , New York.

- **Omaye ,S; Turnbull ,I.D.and Savberligh H.E (1979):** Ascorbic acid analysis II .Determination after derivatisation with 2,2 dinitrophenylhydrazine .Selected method for determination of ascorbic acid in animal cells .tissue and fluid . Method in Enzymology London 62 .p.7.
- **Omer ,O.H.; EL-Malik ,K.H; Mahmoud ,O.M; Haroun ,E.M ;Hawas ,A ;Sweeney ,Dand Magzoub ,M (2002):** Haematological profiles in pure herd cattle naturally infected with theileria annulata in Saudia Arabia . Vet .Parasitol .July 29 .107 (1-2) 161 –168.
- **Omer; O. H; El -Malik; K. H; Magzoub; M; Mahmoud; O. M; Haroun; E. M;Hawas;A.and omar; H. M (2003):** Biochemical Profiles in Friesian cattle naturally infected with Theileria annulata in saud Arabia .Vet. Res Commun27:15-25.
- **Omran and El-kholany; K.H(2003):** field studies on piroplasmosis in Egyptian buffaloes in sharkia province The 2nd sci cong for provincial laboratories 7-10 September 2003.The Egyptian international center for Agriculture.Dokk; Cairo Egypt.
- **Peters,T(1986):** Colorimetric method for determination of total serum protein Clin .Chem .14:1147.
- **Radostits ,O.M.;Blood,D.C.and Gay.C.C.(2002):** Veterinary medicine atextbook of the disease of cattle ,sheep ,goat ,horse and pigs .10th Edition .Bailier ,Tindall, England.
- **Ramazan L and Uslu ,U (2006):** Haematological and coagulation profiles during sever tropical theileriosis in cattle Turk .J .Vet .Anim . Sci.. 30:577-582.
- **Reitman S. and Frankel S. (1957):** Colorimetric determination of transaminases activity Am.J.Clin .Path., 28-36
- **Salem M.A and Mahran O.M.(2003):** parasitological and biochemiecal studies on acute tropical theileriosis in neonatal indigenous and friesian calves in the Egyptian oases A SSIUT.v et.Med J 49(99);156-176.

- **Sandhu;G.S;Grewal;A.S;singh.A;kondal;J.k;Singh;J. and Brar ; R . S . (1998):** Haematological and biochemical studies on experimental *Theileria annulata* infection in crossbred calves. *vet Res commun.* 22;347-354.
- **Sarin ,K;Kumar ,A; Prakash ,A and Sharma a(1993):** Oxidative stress and antioxidant defence mechanism in *plasmodium vivax* malaria before and after chloroquin treatment .*Ind J .Malariol* 30:127-133.
- **Seeling, H.P. and Wust. H (1969):** Colorimetric method of determination of creatinine *Arztl .Lab* 15-34.
- **Selim A.G and saadia ;A.Ali (2007):** clinicopathological studies on theileriosis in cattle at sharkia Governorate.*Vet.J.com.path clinic.Path* vol.20 No1(March) 294-308.
- **Singh ,A.; Singh ,J Grewal ,A.S end Barar R.S.(2001):** Studies on some blood parameters of cross bred calves with experimental *theileria annulata* infection . *Vet .Res .Commun* 25 :298-300.
- **Shiono, H, Yagi, Y; Kumar, A. ;Yamanaka Mand Chikayama,Y (2004):** Accelerated binding of autoantibody to red blood cells with increasing anemia in cattle experimentally infected with *theileria sergenti*. *J.Vet. Med .B. infect. DIS.Vet Public Health..* 51 (1) :39-42.
- **Shkap ,V.; Pipano ,E.; Rasulov ,I.;Azinov D; Savitsky I; Fishl; Krigel, Yand Leibovitch, B (2003):** Proteolytic enzyme activity and attenuation of virulence in *theileria annulata* schizont infected cells . *Vet Parasitol* .July .29 .115 (3): 247-255.
- **Smith Nea B.C(1989):** free radical generation during primary infection with *Nippostrongylus brasiliensis* . *Parasit Immunol* 4:147-160.
- **Smith B.P.(1996):** large animal internal medicine: and E. d:(Mosloy-Yearbook ,INE ,ST.Louis.
- **Song ,K.H.and Sang B.C. (2003):** Prevalence of *theileria sergenti* infection in Korean native cattle by polymerase chain reaction. *Korean j. parasitol.*,41(3):141-145 Related Articles.

- **Stockham, S.L and Scott,M.A (2002):** fundamentals of veterinary clinical pathology Iowa state press.ABLackwell publishing company.
- **Stockham ;S.L;KJemtrup;A.M;Conrad ;P.A Schmidt D.A.;scott; M.A;Robinson T.W(2000):** Theileriosis in amissovri beef and herd caused by theileria buffels: case report, herd investigation, ultrastructure phylogenetic analysis and experimental transmission. Vet .Pathol ,37 (1):11-21.
- **Stocker ,R.;Hunt ,N.H and Wiedeman M.J (1986):** Antioxidant in plasma from mice infected with plasmodium vincki. Bioch .Biophys .Res. Commun 134:152-15.
- **Tanaka KS, Igurchi, H, and Kojs, S.I (1997):** Interaction between vitamin Cand Eare observed in tissue of inherently corbutic rats .Nutr. 127:2060-2064.
- **Tamhane ,A.C. and Dunlop ,D.D(2000):** Statistics and data analysis from elementary to intermediate Upper Saddle Rivee,USA.
- **Tenant ,B.C.(1997):** Hepatic function in clinical ,biochemistry of domestic animals 5th ed Kanelko ,J.J, Harvey ,J.W and Bruss ,M.L.; Academic Press London.
- **Thomas,J .S (2000):** Overview of plasma protein in Schams Veterinary Hematology .5th Ed .Feldman, B.F;Zinkl, J.G and Join, N.C., Lippincott Williams &WILKIN, Philadelphia, Baltimore PP. 891-898.
- **Trinder, P(1969):** Enzymatic determination of glucose Ann .Clin. Biochem., 6-24.
- **Weigl E (1975):** Estimation of total direct and indirect bilirobin Med. Klin.. 70:664-672.
- **Weimann,B.(1991):** Function of vitamin Ein reproduction and in prostacyclin and immunoglobulin synthesis in rats .American Journal of Clinical Nutrition 53: 1056-1060.