

Animal Health Research Institute,
Assiut, Egypt.

BACTERIOLOGICAL AND QUALITATIVE ANALYSIS OF CAMEL'S URINE AND ITS RELATION TO URINARY BLADDER PATHOLOGICAL CHANGES

(With 5 Tables and 2 Figures)

By

G.F. KHAMIS; M.R. ABD ELLAH*;

NEVEEN A. ELNISR*; M. ABD ELMOETY;**

A.M. MANAA; A.A. AAMER* and M.M. ABDUL-HAFEEZ

* Dept. of Animal Medicine, Faculty of Veterinary Medicine, Assiut
University 71526, Assiut, Egypt.

** Dept. of Biochemistry, Faculty of Medicine, Sohag University

(Received at 7/4/2009)

التحليل الوصفي والبكتيري للبول وعلاقته بالتغيرات الباثولوجية للمثانة البولية في الجمال

جابر فرغلي خميس ، محمود رشدي عبد اللاه ، نيفين عبد الغنى النسر ،
محمد أحمد عبد المعطي ، أحمد ممدوح مناع ، أحمد عبد الفتاح عامر ،
محمد محمد عبد الحفيظ

هدفت هذه الدراسة إلى التعرف على أنواع التغيرات الباثولوجية للمثانة البولية في الجمال وعلاقتها بالإصابة البكتيرية للمثانة وبالتغيير في مكونات البول. تم إجراء الدراسة على عدد ٢٥ جمل بمجزر بني عدي (أسيوط، جمهورية مصر العربية)، حيث تم تجميع المثانة من الجمال بعد الذبح وتم سحب عينة بول باستخدام سيرنجة معقمة، واستخدمت هذه العينة في إجراء الفحص الطبيعي والكيميائي والبكتيري. وأيضاً تم فحص المثانة مجهرياً ثم جمعت عينات من جدار المثانة للفحص الهستوباثولوجي. إعتماًداً على نتائج الفحص الهستوباثولوجي، تم تقسيم الحيوانات إلى ثلاثة مجموعات: مجموعة إلتهاب المثانة الحاد، مجموعة إلتهاب المثانة المزمن والمجموعة الضابطة. أثبتت الدراسة ارتفاع نسبة الإصابة إلتهاب المثانة في الجمال إلى ٧٢%، كما ثبت ارتفاع نسبة الإصابة في الجمال الصغيرة إلى ٤٨% (٣-٧ سنوات) عن الجمال الكبيرة في السن ٢٤% (أكبر من ٧ سنوات). تم في هذه الدراسة مناقشة التغيرات الباثولوجية وعلاقتها بالتغيرات في مكونات البول كما تم التعرف على أنواع البكتريا الموجودة في بول هذه الجمال. الخلاصة هي ارتفاع نسبة الإصابة إلتهاب المثانة في الجمال خلال فترة الدراسة. يمكن الإعتتماد على فحص البول في تشخيص إلتهاب المثانة المزمن في الجمال. يوصي البحث بإجراء دراسات أخرى للتعرف على العلاقة بين نسبة الإصابة إلتهاب المثانة البولية في الجمال وفصول السنة.

SUMMARY

The goal of the present study was to screen for urinary bladder affections in camels and correlate it with physicochemical, microscopical, bacterial and pathological changes. A total number of 25 male camels (3-12 years old) were subjected to study. Animals were slaughtered in Bani Adi slaughter house (Assiut, Egypt) during the period from February to May 2009. The urinary bladder was collected under complete aseptic conditions from each slaughtered animal just after evisceration. Urine samples were drawn using sterile syringe and used for both conventional urine analysis and bacteriological examination. An incision was made in the bladder and then it was examined macroscopically for presence of any pathological affection. A part from the bladder wall was kept in neutral buffered formalin for histopathological examination. According to the histopathological findings, camels under investigation were classified into three groups; acute cystitis group (n: 10), chronic cystitis group (n: 8) and control group (n: 7). Seventy two percentages of camels were found suffering from cystitis; out of them, 48% aged 3-7 years old and 24% were above 7 years old. The relationships between pathological changes of the bladder and urine analysis were discussed. The bacteriological examination revealed isolation of *Staphylococcus* sp. (54.54%), *Corynebacterium* sp. (27.27%) and *E. coli* sp. (18.18%) from the camel's urine. In conclusion, incidence of cystitis is higher in young camels than older ones. Urine analysis is helpful in diagnosis of chronic cystitis. Since the incidence of cystitis was rather high in studied period, further studies are required to elucidate the relationship between the season and cystitis in camel.

Key words: Bacteriology, cystitis, camel, histopathology, urine analysis.

INTRODUCTION

The urinary tract may be regarded as a specialized ecosystem in which urine continuously produced by the kidneys is intermittently voided through the urethra, its behavior in health and during infective process is determined by anatomical and functional factors. The bacterial flora of the urethra and pre-urethral area may also play a part in resistance and susceptibility to infection. The composition of urine in part determines the rate of bacterial growth in the urinary tract (William *et al.*, 1998).

Cystitis and urethritis are more common in the female camel because of a shorter urethra and the possibility of retrograde invasion by bacteria (Fowler, 1999), the author added that, the most important predisposing factors for cystitis are uretrolithiasis, bladder paresis and urine stagnation. The bacterial infection cause cystitis mainly come from ascending or descending route or may also occur by expansion from neighboring organs (Sastry, 1999). In some cases both acute and chronic cystitis showed no bacterial isolation. This phenomenon may be due to the destruction of the causative microorganisms by inflammatory reaction in the urinary bladder and hence no microorganisms had isolated. This had been confirmed by Mahanty and Singh (1970) and Hassan *et al.* (1991).

Urine analysis is one of the most important diagnostic tests that can help to localize disease, to determine causes of discolored urine and to identify inflammatory diseases of the urinary system (Pugh, 2002). The present study aimed to screen urinary bladder affections in camels and correlate it with physicochemical, microscopical, bacterial and pathological changes.

MATERIALS and METHODS

Animals

A total number of 25 male camels (3-12 years old) were subjected to study, animals were slaughtered in Bani Adi slaughter house (Assiut, Egypt) during the period from February to May 2009.

Samples

The urinary bladder were collected from each slaughtered animal after evisceration, urine samples were drawn using sterile syringe and divided into two parts; one part was used for physicochemical and microscopical urine analysis and the other part used for bacteriological examination, both the bladder and urine samples were transported to the laboratory in ice bag.

Urine analysis

Urine samples were examined physically, chemically using test strips (Medi-Test Combi 10® SGL, Macherey- Nagel, Germany) and microscopically according to Coles (1986).

Bacteriological examination

For bacterial enrichment, urine samples were inoculated into nutrient broth, overnight incubated at 37°C. From the incubated tubes, loopfulls were streaked onto the surface of both blood agar with 5%

sheep blood and MacConkey agar (Oxoid). The inoculated plates were incubated aerobically at 37°C for 24 hours. The suspected colonies were identified morphologically by Gram's stain and biochemically confirmed according to Quinn *et al.* (1994), using catalase activity, coagulase test as well as novoboicin (30 mcg) and polymixin-13 sulphate (300µ) sensitivity tests for identification of *Staphylococcus* sp.

Pathological examination

The bladder was examined macroscopically for presence of any pathological affection and then a part from the bladder wall was preserved in neutral buffered formalin (10%) and used for histopathological examination. For histopathological examination; the specimens were fixed in 10% formalin solution, washed in tap water and dehydrated in alcohol, cleared in methyl benzoate and embedded in paraffin. Paraffin sections of 5 µ thick were prepared and stained with hematoxylin and eosin according to Bancroft and Stevens (1982).

Statistical analysis

Data from cystitis group (specific gravity, pH, RBCs/HPF, WBCs/HPF) were compared with those from control camels using one way ANOVA followed by Dunnett test (post-hoc analysis, $p < 0.05$). Data were expressed as Mean \pm SD, Statistical analysis was conducted using SPSS 16.0 for windows (SPSS, Chicago, USA).

RESULTS

According to the histopathological findings, camels under investigation were classified into three groups; acute cystitis group (n: 10), chronic cystitis group (n: 8) and control group (n: 7).

Age of camels

As shown in table 1, there were 72% of camels suffered from cystitis, out of them 48% were 3-7 years old and 24% above 7 years old.

Bacteriological examination:

The following bacterial species were isolated from camel's urine, *Staphylococcus epidermidis*, *Staphylococcus saprophyticus*, *Staphylococcus aureus*, *Corynebacterium* sp. and *E-coli* sp. (Tables 4 and 5).

Pathological findings

Acute cystitis

Grossly; the affected urinary bladder was edematous and congested with areas of haemorrhages (Table 2 and Fig. 1). Microscopically; the urinary bladder showed vascular degeneration.

Severe congestion was observed in their submucosal, intermuscular and serosal blood vessels with leucocytic infiltration (neutrophils and lymphocytes) around these blood vessels. The lamina propria was edematous and has a diffuse neutrophilic infiltration. These leucocytic infiltration was also found in the muscular layer (Fig. 2)

Chronic cystitis

Grossly; the wall of the bladder was thickened and pale in color (Fig. 1). Microscopical examination showed desquamation of the epithelial layer, hypertrophy of the muscular layer with focal and in some cases diffuse intermuscular aggregation mainly lymphocytes and macrophage cells. Severe proliferation of the tunica externa of the serosal blood vessels, which infiltrated with the inflammatory cells, mainly macrophage cells (Fig. 2).

Urine analysis

Urine analysis for cases with acute cystitis revealed the presence of traces of protein, microscopical examination revealed significant increases in RBCS $8.43 \pm 3.45/\text{HPF}$ and in pus cells $4.00 \pm 1.00/\text{HPF}$ (Table 3).

Urine from cases with chronic cystitis was whitish, turbid and with strong urineferous odor, there was a significant increase in the urine specific gravity 1.021 ± 0.003 , with presence of protein and blood. Microscopical examination revealed the presence of clumps of transitional epithelial cells, significant increase in RBCS $55.7 \pm 3.77/\text{HPF}$ and in pus cells $5.57 \pm 0.78/\text{HPF}$ (Table 3).

Table 1: Age of the examined camels in relation to urinary bladder affections.

Age	Bladder	Normal		Cystitis	
		No.	%	No.	%
3-7 years		6	24	12	48
Over 7 years		1	4	6	24
Total		7	28	18	72

Table 2: Morphological findings and distribution of urinary bladder affections according to camel's age

Disease	Morphological findings	No. of cases	Percent of cases	3-7 years	Over 7 years
Acute Cystitis	The affected urinary bladder was edematous and congested with areas of haemorrhages.	10	40	7	3
Chronic cystitis	The Wall of the urinary bladder was thickened and pale in color.	8	32	5	3

Table 3: Physical, chemical and microscopical findings in camel's urine

	Parameters	Control group	Acute Cystitis	Chronic cystitis
Physical examination	Colour	pale yellow – yellow	pale yellow - yellow	whitish
	Odour	Urineferous	urineferous	strong urineferous
	Transparency	Clear	clear	turbid
	Specific gravity	1.013 ± 0.003	1.014 ± 0.002 ^{NS}	1.021 ± 0.003**
Chemical examination	pH	8.43 ± 0.53	8.71 ± 0.48 ^{NS}	8.85 ± 0.37 ^{NS}
	Urobili	Normal	normal	normal
	Nitrite	Negative	negative	negative
	Protein	Negative	+	+++
	Glucose	Negative	negative	negative
	Ketone	Negative	negative	negative
	RBCs	Negative	+	+++
Microscopical examination	RBCs/HPF	0.42 ± 0.53	8.43 ± 3.45**	55.71 ± 3.77**
	WBCs/HPF	0.86 ± 0.14	4.00 ± 1.00**	5.57 ± 0.78**
	Epithelial cells	Negative	negative	Transitional (+++)
	Crystals	Negative	negative	negative

**: significant (p<0.01)

NS: Not significant

Table 4: Bacteriological findings in urine of investigated camels

Examined urine samples		Negative for bacteria	Positive for bacteria (No. 17)	
			Single	Mixed
Number	25	8	12	5
Percent	100	32	48	20

Table 5: Bacterial strains isolated from urine samples

Bacterial species	Number	Percent
<i>Staphylococcus aureus</i>	1	4.55
<i>Staphylococcus epidermidis</i>	7	31.82
<i>Staphylococcus saprophyticus</i>	4	18.18
<i>Corynbacterium sp.</i>	6	27.27
<i>E-coli sp.</i>	4	18.18
Total	22	100%

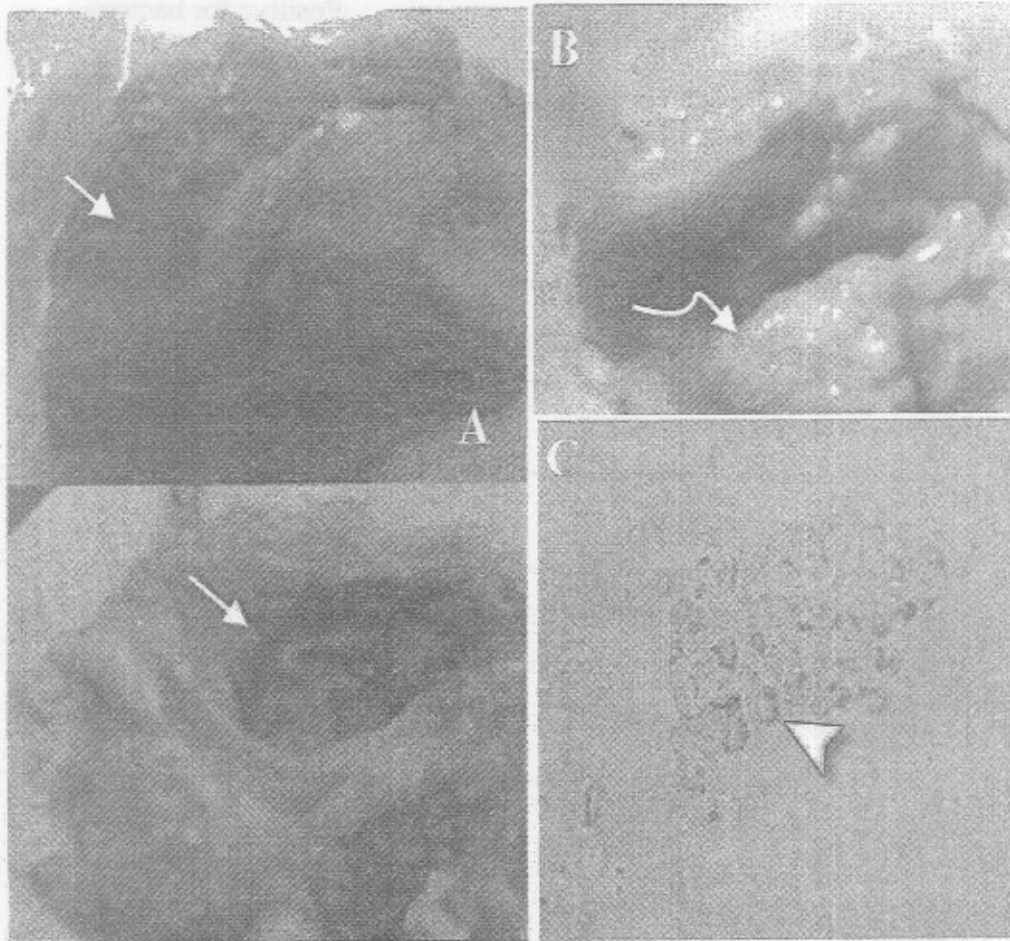


Fig. 1: Urinary bladder of camel. (A) Acute cystitis showing congested mucosa (arrow). (B) Chronic cystitis increase thickness of the muscular layer (curved arrow). (C) Urine sediment in chronic cystitis showing collection from transitional epithelial cells (arrow head) and RBCs (x40).

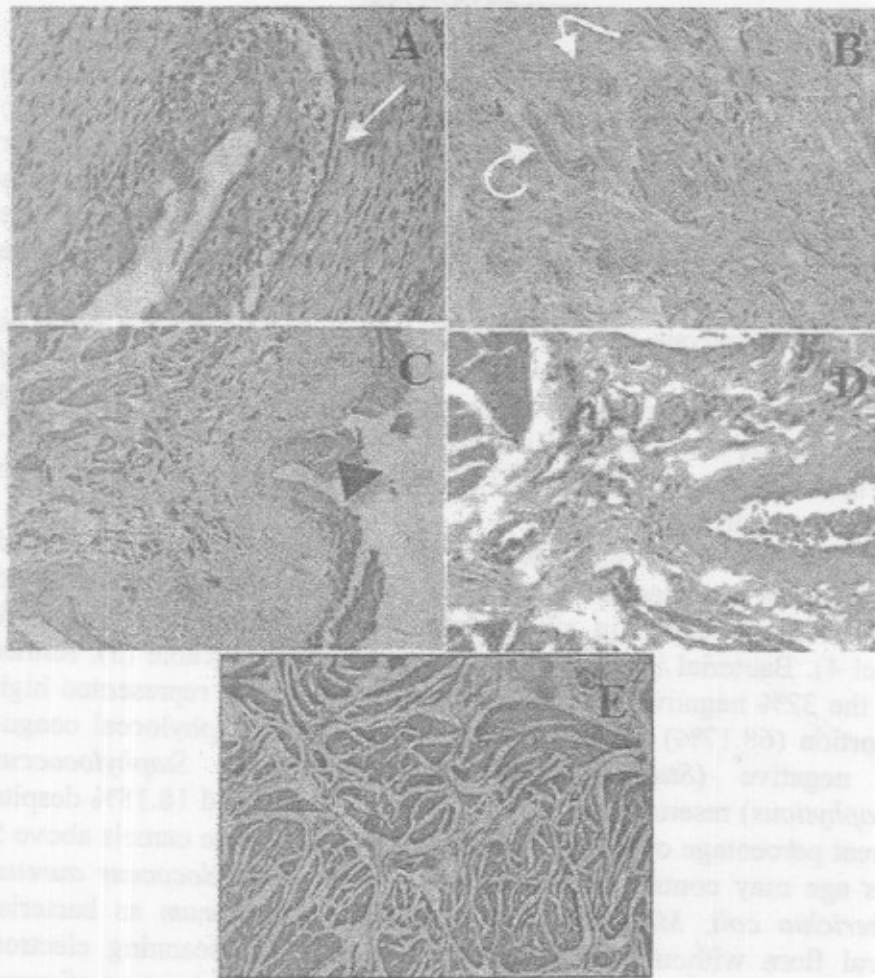


Fig. 2: Photomicrograph showing urinary bladder in camel cystitis. (A) Acute cystitis showing vacuolar degeneration of the epithelium of the urinary bladder (arrow) (H&Ex40). (B) Acute cystitis showing congestion of mucosal and submucosal blood vessels (curved arrow) (H&Ex10). (C) Chronic cystitis showing desquamation of the epithelial lining and congestion of mucosal blood vessels (arrow head) (H&Ex10). (D) Chronic cystitis showing blood vessel surrounded with proliferating connective tissue and leucocytic infiltration (H&E x40). (E) Chronic cystitis showing muscular hypertrophy with connective tissue proliferation and leucocytic infiltration (H&E x10).

DISCUSSION

In the present study the incidence of cystitis was high in investigated camels (72%), in addition, young camels (3-7 years old) were more susceptible (48%) to cystitis than older one (24%), higher incidence of cystitis may be attributed to the time of the year, as samples were collected during the rutting season, further investigation are required to confirm or exclude the relation between season and incidence of cystitis in camel.

Urine analysis by test strips in control camels are the same as reported by Fowler (1999), who stated that normal urine sample of camel is yellow to amber in color, has a pH ranged from 7-8.5 and specific gravity 1.010 – 1.048. Control group in our study has a pH 8-8.5, specific gravity 1.010-1.015 and yellow colored urine with urineferous odor.

Bacteriological examinations revealed that 32% of examined urine samples were negative for bacterial isolation. The rest 68% showed positive results either in single form 48% or in mixed form 20% (Tabel 4). Bacterial isolated strains were tabulated in Table (5). Rather than the 32% negative bacterial samples, commensals represented high proportion (68.17%) of the isolated strains where Staphylococcal coagulase negative (*Staphylococcus epidermedis* and *Staphylococcus saprophyticus*) resembled 49.99% and E-coli resembled 18.18% despite of great percentage of cystitis 72%. The urine of female camels above 5 years age may contain *Enterococcus faecalis*, *Staphylococcus aureus*, *Escherichia coli*, *Micrococcus sp*, *Gemella marbillarum* as bacterial natural flora without any pathological lesions. By scanning electron microscope, camel's urine affected the morphological structure of some pathogens such as; MERSA, *E-coli* and *Pasteurella aeruginosa* (Aishea Ba-hatheq, 2006). There was weak correlation between cystitis and bacterial isolation – in the present study - as we failed to isolate any bacterial agents form some cystic cases, while it was detected bacterial existence in some of control group. According to the above mentioned premise, it seems that cystitis in the present slaughtered camels might be attributed mainly to etiological parameters other than bacterial infections.

According to the pathological findings, both acute and chronic cystitis were found in the investigated camels. Grossly, our result was agreed with Mc Gavin and Zachary (2007), as they said that the vascular damage in case of acute cystitis predisposes to haemorrhage, leakage of

fibrin. Also Hassan *et al.* (1991), Damjanov and Linder (2000) and Carlton and Mc Gavin (2001) also found that the urinary bladder in case of acute cystitis was congested. Microscopically our results were explained by Carlton and Mc Gavin (2001) and Mc Gavin and Zachary (2007) as they said that cystitis occur when the bacteria are able to overcome the normal defense mechanisms and adhere to or invade the urinary bladder mucosa, once bacteria gain access to the lamina propria they cause vascular damage. The lesion in the muscular layer was mentioned and agrees with Divers (1996).

Abnormal findings in the urine sample in cases suffered from acute cystic were increase the RBCs in the urine sediment and slight increase in the pus cells, results of urine analysis are in accordance with the above histopathological findings. Urine analysis is not sufficient for diagnosis of acute cystitis in camels.

Grossly, the picture of the urinary bladder with chronic cystitis was similar to those mentioned by Hassan *et al.* (1991) and Damjanov and Linder (2000) as they found that the urinary bladder in case of chronic cystitis has thick walls and may show trabeculation as a result of smooth muscle hypertrophy. Microscopically: the desquamation of the epithelial layer was seen also by Hassan *et al.* (1991), Sastry (1999) and Mc Gavin and Zachary (2007). Also we found hypertrophy of the muscular layer with focal and diffuse intermuscular leucocytic aggregation, this result was similar to those obtained by Abdel Baset (1991), who found fibrosis and focal leucocytic aggregation in the tunica muscularies of the camel's urinary bladder suffered from chronic cystitis.

The urine in case of chronic cystitis was turbid, whitish in color due to the presence of large numbers of transitional epithelial cells, RBCS and Pus cells (Fig. 1). The pH of urine increased due to presence of bacteria, and urine specific gravity reached up to 1.021, which is higher than control. Urine analysis in chronic cystitis is the same as reported by Fowler (1999). The results indicated that urine analysis is sufficient for diagnosis of chronic cystitis in camels and correlated well with the histopathological findings.

In conclusion, incidence of cystitis is higher in young camels than older one. Urine analysis is helpful in diagnosis of chronic cystitis. The incidence of cystitis was high during February to May, further studies are required to elucidate the relationship between the season and cystitis in camel.

REFERENCES

- Abdel-Baset, T.M. (1991)*: Pathological studies on the relation between skin affections and the pathological changes in kidneys, suprarenal and urinary bladder in camels. Thesis, Faculty of Veterinary Medicine (Banha branch), Zagazeg University.
- Aishea, M. Ba-hatheq (2006)*: Antimicrobial effect of camel's urine on some pathogenic bacteria. Thesis for Ph.D. Faculty of Science- Biology Department. Geddah, Suadia Arabia.
- Bancroft, J.D. and Stevens, A. (1982)*: Theory and Practice of Histopathological Techniques, 2nd ed., Churchill Livingstone, Edinburgh, pp: 134.
- Carlton, W.W. and Mc Gavin, M.D. (2001)*: Thomson's Special Veterinary Pathology. 2nd Ed., Mosby Publisher, pp: 234-244.
- Coles, E.H. (1986)*: Veterinary Clinical Pathology. 4th Ed., Saunders Comp. Philadelphia, London, Toronto. pp: 221.
- Damjanov, I. and Linder, J. (2000)*: Pathology, A Color Atlas. St. Louis, Mosby Publisher.
- Divers, T.J. (1996)*: Diseases of the Renal System. In: Large Animal Internal Medicine (Smith, B.P. editor). 2nd Ed., St Louis, Mosby Publisher.
- Fowler, M.E. (1999)*: Medicine and Surgery of South American Camelids: Llama, Alpaca, Vicuña, Guanaco. 2nd Ed., Wiley-Blackwell, pp: 340.
- Hassan, H.A.; Bahgat, A.M.; Hafez, M.H.; Moursi, A.E and El attar, E.R. (1991)*: Pathological study on kidney and urinary bladder affections in camels at Sharkia province. M. V. Sc. Thesis, Faculty of Veterinary Medicine, Zagazeg University.
- Mahanty, G.C. and Singh, C.M. (1970)*: Pathogenic feature of focal non suppurative interstitial nephritis in buffaloes. Indian Vet. J. 47: 391-396.
- Mc Gavin, M.D and Zachary, J.F. (2007)*: Pathologic Basis of Veterinary Diseases. 4th Ed., Mosby Publisher, pp: 686-691.
- Pugh, D.G. (2002)*: Sheep and Goat Medicine. 1st Ed., W. B. Saunders Company, pp: 290-303.
- Quinn, P.J.; Carter, M.E.; Markey, B. and Carter, G.R. (1994)*: Clinical Veterinary Microbiology. Walfe Publishing, Mosby Year Book, Europe Limited.
- Sastry, G.A. (1999)*: Veterinary Pathology. 6th Ed., Part II, CBS Publishers and distributors, pp: 395-396.
- William, J.; Hausler, J.R. and Max Sussman (1998)*: Topley and Wilson's Microbiology and Microbial infection. 9th Ed. Vol. (3), Oxford University Press Inc. New York, pp: 602-610.